

SG1D4 Rabbit pAb

CatalogNo: YT6714

Key Features

Host Species

- Rabbit

Reactivity

- Human

Applications

- IHC,IF

MW

- 9kD (Calculated)

Isotype

- IgG

Recommended Dilution Ratios

IHC 1:50-200

IF 1:50-200

Storage

Storage*

-15°C to -25°C/1 year(Do not lower than -25°C)

Formulation

Liquid in PBS containing 50% glycerol, 0.5% BSA and 0.02% sodium azide.

Basic Information

Clonality

Polyclonal

Immunogen Information

Immunogen

Synthesized peptide derived from human SG1D4 AA range: 28-78

Specificity

This antibody detects endogenous levels of SG1D4 at Human

Target Information

Gene name

SCGB1D4 UNQ517/PRO812

Protein Name SG1D4

Organism

Human

Gene ID

[404552;](#)

UniProt ID

[Q6XE38;](#)

**Cellular
Localization**

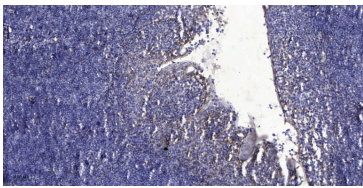
Secreted.

Tissue specificity Expressed in all tissues; the highest level of expression is detectable in lymph nodes, tonsil, cultured lymphoblasts and ovary.

Function

Function: Seems to be involved in the regulation of chemotactic cell migration and invasion., induction: By interferon gamma., similarity: Belongs to the secretoglobin family. Lipophilin subfamily., tissue specificity: Expressed in all tissues; the highest level of expression is detectable in lymph nodes, tonsil, cultured lymphoblasts and ovary.,

| Validation Data



Immunohistochemical analysis of paraffin-embedded human tonsil. 1, Antibody was diluted at 1:200(4° overnight). 2, Tris-EDTA, pH9.0 was used for antigen retrieval. 3, Secondary antibody was diluted at 1:200(room temperature, 30min).

| Contact information

Orders: order.cn@immunoway.com
Support: support.cn@immunoway.com
Telephone: 400-8787-807(China)
Website: <http://www.immunoway.com.cn>
Address: 2200 Ringwood Ave San Jose, CA 95131 USA



Please scan the QR code to access additional product information:
SG1D4 Rabbit pAb

For Research Use Only. Not for Use in Diagnostic Procedures.

[Antibody](#) | [ELISA Kits](#) | [Protein](#) | [Reagents](#)