

FNDC1 Rabbit pAb

CatalogNo: YT6702

Key Features

Host Species

- Rabbit

Reactivity

- Human,Rat

Applications

- WB

MW

- 208kD (Calculated)

Isotype

- IgG

Storage

Storage* -15°C to -25°C/1 year(Do not lower than -25°C)

Formulation Liquid in PBS containing 50% glycerol, 0.5% BSA and 0.02% sodium azide.

Recommended Dilution Ratios

WB 1:500-2000

Basic Information

Clonality Polyclonal

Immunogen Information

Immunogen Synthesized peptide derived from human FNDC1 AA range: 988-1038

Specificity This antibody detects endogenous levels of FNDC1 at Human/Rat

Target Information

Gene name FNDC1 FNDC2 KIAA1866 MEL4B3

Protein Name FNDC1

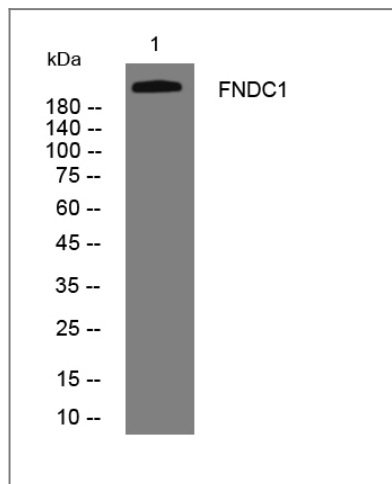
Organism	Gene ID	UniProt ID
Human	84624;	Q4ZHG4;
Rat	308099;	Q2Q0I9;

Cellular Localization Secreted .

Tissue specificity Almost absent from healthy skin; especially in epidermal keratinocytes, skin fibroblasts or endothelial cells and is barely detectable in benign melanocytic naevi. Expressed in the stroma close to skin tumors, in the tumor cells themselves and in the epidermis of psoriasis.

Function Caution:It is uncertain whether Met-1 or Met-53 is the initiator.,Function:May be an activator of G protein signaling.,induction:By TGF-beta present in the melanoma cell conditioned medium (MCCM).,similarity:Contains 5 fibronectin type-III domains.,tissue specificity:Almost absent from healthy skin; especially in epidermal keratinocytes, skin fibroblasts or endothelial cells and is barely detectable in benign melanocytic naevi. Expressed in the stroma close to skin tumors, in the tumor cells themselves and in the epidermis of psoriasis.,

Validation Data



Western blot analysis of lysates from PC-12 cells, primary antibody was diluted at 1:1000, 4° over night

Contact information

Orders: order.cn@immunoway.com
Support: support.cn@immunoway.com
Telephone: 400-8787-807(China)
Website: <http://www.immunoway.com.cn>
Address: 2200 Ringwood Ave San Jose, CA 95131 USA



Please scan the QR code to access additional product information:
FNDC1 Rabbit pAb

