

## BT3A3 Rabbit pAb

CatalogNo: YT6696

### | Key Features

#### Host Species

- Rabbit

#### Reactivity

- Human

#### Applications

- WB

#### MW

- 64kD (Calculated)

#### Isotype

- IgG

### | Recommended Dilution Ratios

WB 1:500-2000

### | Storage

**Storage\*** -15°C to -25°C/1 year(Do not lower than -25°C)

**Formulation** Liquid in PBS containing 50% glycerol, 0.5% BSA and 0.02% sodium azide.

### | Basic Information

**Clonality** Polyclonal

### | Immunogen Information

**Immunogen** Synthesized peptide derived from human BT3A3 AA range: 148-198

**Specificity** This antibody detects endogenous levels of BT3A3 at Human

### | Target Information

**Gene name** BTN3A3 BTF3

**Protein Name** BT3A3

**Organism**

**Gene ID**

**UniProt ID**

Human

[10384;](#)

[O00478;](#)

**Cellular  
Localization**

Cell membrane ; Single-pass type I membrane protein .

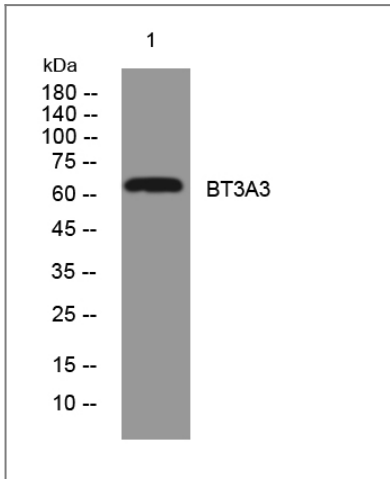
**Tissue specificity**

Detected in peripheral blood mononuclear cells and in T-cells (at protein level). Detected in spleen and lymphocytes.

**Function**

similarity:Belongs to the immunoglobulin superfamily. BTN/MOG family.,similarity:Contains 1 B30.2/SPRY domain.,similarity:Contains 2 Ig-like V-type (immunoglobulin-like) domains.,

## | Validation Data



Western blot analysis of lysates from HeLa cells, primary antibody was diluted at 1:1000, 4°over night

## | Contact information

Orders: order.cn@immunoway.com  
Support: support.cn@immunoway.com  
Telephone: 400-8787-807(China)  
Website: <http://www.immunoway.com.cn>  
Address: 2200 Ringwood Ave San Jose, CA 95131 USA



Please scan the QR code to access additional product information:  
**BT3A3 Rabbit pAb**