

TM242 Rabbit pAb

CatalogNo: YT6693

Key Features

Host Species

- Rabbit

Reactivity

- Human, Mouse

Applications

- WB

MW

- 16kD (Calculated)

Isotype

- IgG

Storage

Storage* -15°C to -25°C/1 year (Do not lower than -25°C)

Formulation Liquid in PBS containing 50% glycerol, 0.5% BSA and 0.02% sodium azide.

Recommended Dilution Ratios

WB 1:500-2000

Basic Information

Clonality Polyclonal

Immunogen Information

Immunogen Synthesized peptide derived from human TM242 AA range: 53-103

Specificity This antibody detects endogenous levels of TM242 at Human/Mouse

Target Information

Gene name TMEM242 C6orf35 BM-033 HSPC287

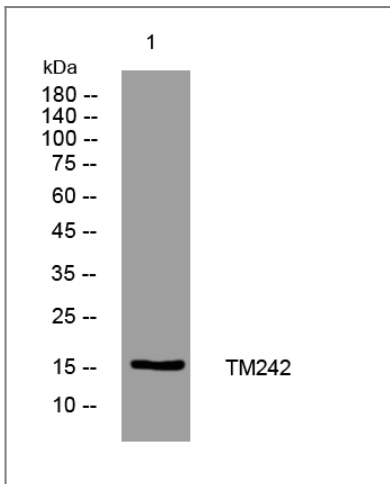
Protein Name TM242

Organism	Gene ID	UniProt ID
Human	729515 ;	Q9NWH2 ;
Mouse	70544 ;	Q8VCR3 ;

Cellular Localization Mitochondrion inner membrane ; Multi-pass membrane protein .

Function similarity:Belongs to the UPF0463 family. ,similarity:Contains 28 TPR repeats. ,

Validation Data



Western blot analysis of lysates from HpeG2 cells, primary antibody was diluted at 1:1000, 4°C over night

Contact information

Orders: order.cn@immunoway.com
Support: support.cn@immunoway.com
Telephone: 400-8787-807(China)
Website: <http://www.immunoway.com.cn>
Address: 2200 Ringwood Ave San Jose, CA 95131 USA



Please scan the QR code to access additional product information:
TM242 Rabbit pAb

For Research Use Only. Not for Use in Diagnostic Procedures.

[Antibody](#) | [ELISA Kits](#) | [Protein](#) | [Reagents](#)