

LMBRL Rabbit pAb

CatalogNo: YT6666

Key Features

Host Species

- Rabbit

Reactivity

- Human, Mouse

Applications

- WB, IHC

MW

- 54kD (Calculated)

Isotype

- IgG

Recommended Dilution Ratios

WB 1:500-2000

IHC 1:50-300

Storage

Storage*

-15°C to -25°C/1 year (Do not lower than -25°C)

Formulation

Liquid in PBS containing 50% glycerol, 0.5% BSA and 0.02% sodium azide.

Basic Information

Clonality

Polyclonal

Immunogen Information

Immunogen

Synthesized peptide derived from human LMBRL AA range: 220-270

Specificity

This antibody detects endogenous levels of LMBRL at Human/Mouse

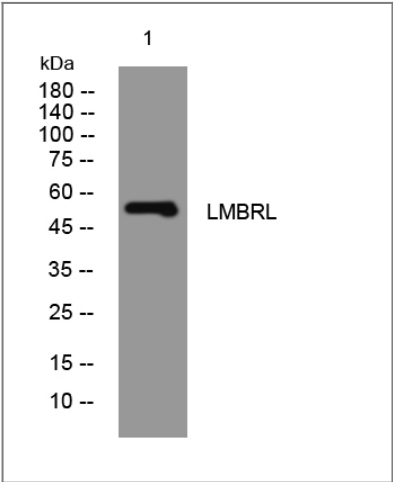
Target Information

Gene name

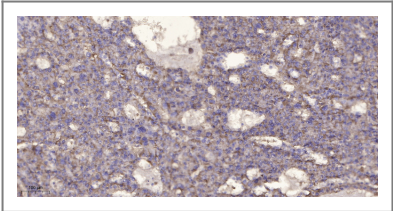
LMBR1L KIAA1174 LIMR UNQ458/PRO783

Protein Name	LMBRL		
	Organism	Gene ID	UniProt ID
	Human	55716;	Q6UX01;
	Mouse	74775;	Q9D1E5;
Cellular Localization	Cell membrane ; Multi-pass membrane protein . Endoplasmic reticulum membrane ; Multi-pass membrane protein .		
Tissue specificity	Expressed in testis, pituitary gland, adrenal gland, trachea, placenta, thymus, cerebellum, stomach, mammary gland, spinal cord. A weaker expression is detected in colon, pancreas, and prostate.		
Function	developmental stage:Expressed in fetal kidney and lung.,Function:Probable LCN1 receptor. May mediate LCN1 endocytosis.,similarity:Belongs to the LMR family.,tissue specificity:Expressed in testis, pituitary gland, adrenal gland, trachea, placenta, thymus, cerebellum, stomach, mammary gland, spinal cord. A weaker expression is detected in colon, pancreas, and prostate.,		

| Validation Data



Western blot analysis of lysates from A549 cells, primary antibody was diluted at 1:1000, 4°over night



Immunohistochemical analysis of paraffin-embedded human liver cancer. 1, Antibody was diluted at 1:200(4° overnight). 2, Tris-EDTA,pH9.0 was used for antigen retrieval. 3,Secondary antibody was diluted at 1:200(room temperature, 45min).

| Contact information

Orders: order.cn@immunoway.com
Support: support.cn@immunoway.com
Telephone: 400-8787-807(China)
Website: <http://www.immunoway.com.cn>
Address: 2200 Ringwood Ave San Jose, CA 95131 USA



Please scan the QR code
to access additional
product information:
LMBRL Rabbit pAb

For Research Use Only. Not for Use in Diagnostic Procedures.

[Antibody](#) | [ELISA Kits](#) | [Protein](#) | [Reagents](#)