

SY14L Rabbit pAb

CatalogNo: YT6662

Key Features

Host Species

- Rabbit

Reactivity

- Human

Applications

- WB,ELISA,IHC

MW

- 21kD (Calculated)

Isotype

- IgG

Recommended Dilution Ratios

WB 1:500-2000

IHC 1:50-300

ELISA 1:2000-20000

Storage

Storage* -15°C to -25°C/1 year(Do not lower than -25°C)

Formulation Liquid in PBS containing 50% glycerol, 0.5% BSA and 0.02% sodium azide.

Basic Information

Clonality Polyclonal

Immunogen Information

Immunogen Synthesized peptide derived from human SY14L AA range: 85-135

Specificity This antibody detects endogenous levels of SY14L at Human

Target Information

Gene name SYT14L SYTDEP

Protein Name SY14L

Organism

Gene ID

UniProt ID

Human

[Q58G82](#);

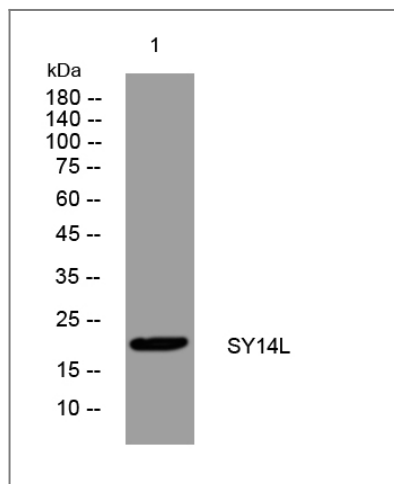
**Cellular
Localization**

plasma membrane,

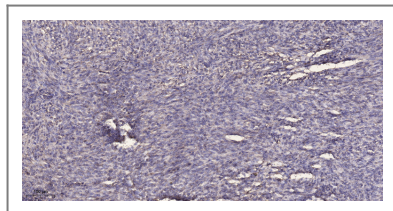
Tissue specificity

Expressed in mature peripheral blood neutrophils (at protein level) (PubMed:16376304).
Expressed in heart, pancreas, liver and skeletal muscle (PubMed:11543631). Expressed in
umbilical vein endothelial cells and melanocytes (PubMed:23999003).

Validation Data



Western blot analysis of lysates from MCF-7 cells, primary antibody was diluted at 1:1000, 4° over night



Immunohistochemical analysis of paraffin-embedded human Colon cancer. 1, Antibody was diluted at 1:200(4° overnight). 2, Tris-EDTA,pH9.0 was used for antigen retrieval. 3,Secondary antibody was diluted at 1:200(room temperature, 45min).

Contact information

Orders: order.cn@immunoway.com
Support: support.cn@immunoway.com
Telephone: 400-8787-807(China)
Website: <http://www.immunoway.com.cn>
Address: 2200 Ringwood Ave San Jose, CA 95131 USA



Please scan the QR code
to access additional
product information:
SY14L Rabbit pAb

