

ODPX Rabbit pAb

CatalogNo: YT6637

Key Features

Host Species

- Rabbit

Reactivity

- Human, Mouse

Applications

- WB

MW

- 55kD (Calculated)

Isotype

- IgG

Recommended Dilution Ratios

WB 1:500-2000

Storage

Storage* -15°C to -25°C/1 year (Do not lower than -25°C)

Formulation Liquid in PBS containing 50% glycerol, 0.5% BSA and 0.02% sodium azide.

Basic Information

Clonality Polyclonal

Immunogen Information

Immunogen Synthesized peptide derived from human ODPX AA range: 24-74

Specificity This antibody detects endogenous levels of ODPX at Human/Mouse

Target Information

Gene name PDHX PDX1

Protein Name

ODPX

Organism**Gene ID****UniProt ID**

Human

[8050;](#)[O00330;](#)

Mouse

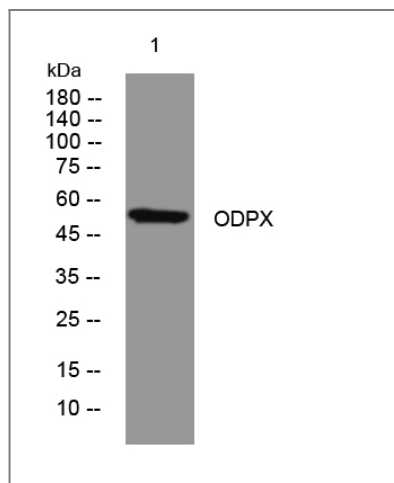
[27402;](#)[Q8BKZ9;](#)**Cellular
Localization**

Mitochondrion matrix.

Function

Disease: Defects in PDHX are a cause of lacticacidemia [MIM:245349].,Function: Required for anchoring dihydrolipoamide dehydrogenase (E3) to the dihydrolipoamide transacetylase (E2) core of the pyruvate dehydrogenase complexes of eukaryotes. This specific binding is essential for a functional PDH complex.,similarity: Belongs to the 2-oxoacid dehydrogenase family.,similarity: Contains 1 lipoyl-binding domain.,subunit: Eukaryotic pyruvate dehydrogenase complexes are organized about a core consisting of the oligomeric dihydrolipoamide acetyl-transferase, around which are arranged multiple copies of pyruvate dehydrogenase, dihydrolipoamide dehydrogenase and protein X bound by non-covalent bonds.,

Validation Data



Western blot analysis of lysates from 3T3 cells, primary antibody was diluted at 1:1000, 4° over night

Contact information

Orders: order.cn@immunoway.com
Support: support.cn@immunoway.com
Telephone: 400-8787-807(China)
Website: <http://www.immunoway.com.cn>
Address: 2200 Ringwood Ave San Jose, CA 95131 USA



Please scan the QR code to access additional product information:
ODPX Rabbit pAb

