

P4HA3 Rabbit pAb

CatalogNo: YT6617

| Key Features

Host Species

- Rabbit

Reactivity

- Human, Mouse, Rat

Applications

- WB

MW

- 60kD (Calculated)

Isotype

- IgG

| Recommended Dilution Ratios

WB 1:500-2000

| Storage

Storage* -15°C to -25°C/1 year (Do not lower than -25°C)

Formulation Liquid in PBS containing 50% glycerol, 0.5% BSA and 0.02% sodium azide.

| Basic Information

Clonality Polyclonal

| Immunogen Information

Immunogen Synthesized peptide derived from human P4HA3 AA range: 211-261

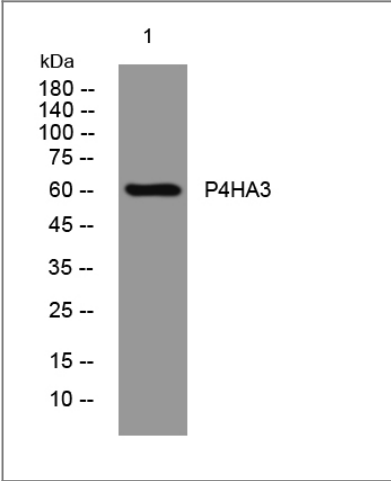
Specificity This antibody detects endogenous levels of P4HA3 at Human/Mouse/Rat

| Target Information

Gene name P4HA3 UNQ711/PRO1374

Protein Name	P4HA3		
	Organism	Gene ID	UniProt ID
	Human	283208;	Q7Z4N8;
	Mouse		Q6W3F0;
	Rat	361612;	Q6W3E9;
Cellular Localization	Endoplasmic reticulum lumen .		
Tissue specificity	Highly expressed in placenta, liver and fetal skin. Weakly expressed in fetal epiphyseal cartilage, fetal liver, fibroblast, lung and skeletal muscle. Expressed also in fibrous cap of carotid atherosclerotic lesions.		
Function	Catalytic activity:Procollagen L-proline + 2-oxoglutarate + O(2) = procollagen trans-4-hydroxy-L-proline + succinate + CO(2).,cofactor:Ascorbate.,cofactor:Binds 1 Fe(2+) ion per subunit.,Function:Catalyzes the post-translational formation of 4-hydroxyproline in -Xaa-Pro-Gly- sequences in collagens and other proteins.,PTM:N-glycosylation plays no role in the catalytic activity.,similarity:Belongs to the P4HA family.,similarity:Contains 1 PKHD (prolyl/lysyl hydroxylase) domain.,similarity:Contains 1 TPR repeat.,subunit:Heterotetramer of two alpha-3 chains and two beta chains (the beta chain is the multi-functional PDI).,tissue specificity:Highly expressed in placenta, liver and fetal skin. Weakly expressed in fetal epiphyseal cartilage, fetal liver, fibroblast, lung and skeletal muscle. Expressed also in fibrous cap of carotid atherosclerotic lesions.,		

Validation Data



Western blot analysis of lysates from HuvEc cells, primary antibody was diluted at 1:1000, 4°over night

Contact information

Orders: order.cn@immunoway.com
Support: support.cn@immunoway.com
Telephone: 400-8787-807(China)
Website: <http://www.immunoway.com.cn>
Address: 2200 Ringwood Ave San Jose, CA 95131 USA



Please scan the QR code
to access additional
product information:
P4HA3 Rabbit pAb

For Research Use Only. Not for Use in Diagnostic Procedures.

[Antibody](#) | [ELISA Kits](#) | [Protein](#) | [Reagents](#)