

TRI66 Rabbit pAb

CatalogNo: YT6600

| Key Features

Host Species

- Rabbit

Reactivity

- Human, Mouse

Applications

- WB

MW

- 134kD (Calculated)

Isotype

- IgG

| Recommended Dilution Ratios

WB 1:500-2000

| Storage

Storage* -15°C to -25°C/1 year (Do not lower than -25°C)

Formulation Liquid in PBS containing 50% glycerol, 0.5% BSA and 0.02% sodium azide.

| Basic Information

Clonality Polyclonal

| Immunogen Information

Immunogen Synthesized peptide derived from human TRI66 AA range: 608-658

Specificity This antibody detects endogenous levels of TRI66 at Human/Mouse

| Target Information

Gene name TRIM66 C11orf29 KIAA0298

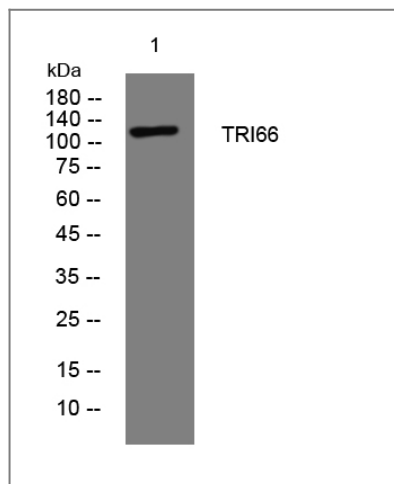
Protein Name TRI66

Organism	Gene ID	UniProt ID
Human	9866 ;	O15016 ;
Mouse	330627 ;	Q924W6 ;

Cellular Localization Nucleus. Forms discrete foci within the centromeric chromocenter and surrounding nucleoplasm. .

Function Function:May function as transcription repressor; The repressive effects are mediated, at least in part, by recruitment of deacetylase activity. May play a role as negative regulator of postmeiotic genes acting through CBX3 complex formation and centromere association.,similarity:Contains 1 bromo domain.,similarity:Contains 1 PHD-type zinc finger.,similarity:Contains 2 B box-type zinc fingers.,subcellular location:Forms discrete foci within the centromeric chromocenter and surrounding nucleoplasm.,subunit:Can form homo- and heterodimers. Interacts with CBX5, CBX1 and CBX3 via PxVxL motif.,

Validation Data



Western blot analysis of lysates from A549 cells, primary antibody was diluted at 1:1000, 4° over night

Contact information

Orders: order.cn@immunoway.com
Support: support.cn@immunoway.com
Telephone: 400-8787-807(China)
Website: <http://www.immunoway.com.cn>
Address: 2200 Ringwood Ave San Jose, CA 95131 USA



Please scan the QR code to access additional product information:
TRI66 Rabbit pAb