

PMS2L Rabbit pAb

CatalogNo: YT6587

Key Features

Host Species

- Rabbit

Reactivity

- Human

Applications

- WB,IHC

MW

- 21kD (Calculated)

Isotype

- IgG

Storage

Storage* -15°C to -25°C/1 year(Do not lower than -25°C)

Formulation Liquid in PBS containing 50% glycerol, 0.5% BSA and 0.02% sodium azide.

Recommended Dilution Ratios

WB 1:500-2000

IHC 1:50-300

Basic Information

Clonality Polyclonal

Immunogen Information

Immunogen Synthesized peptide derived from human PMS2L AA range: 123-173

Specificity This antibody detects endogenous levels of PMS2L at Human

Target Information

Gene name PMS2CL

Protein Name PMS2L

Organism

Gene ID

UniProt ID

Human

[Q68D20](#);

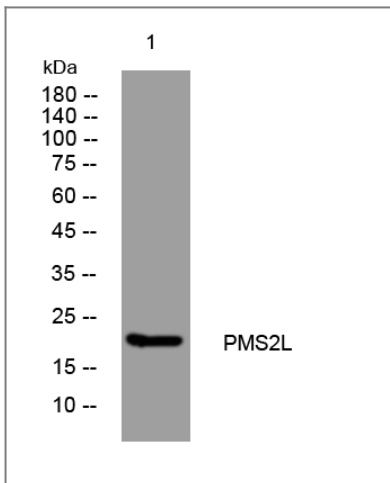
Cellular Localization

mismatch repair complex,

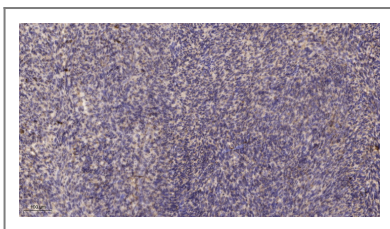
Function

Caution:According to PubMed:15077197, it is a pseudogene. However, a peptide specific to this protein was identified by mass spectrometry (PubMed:17525332). Given that the product described by PubMed:15077197 is located downstream and on another frame of the transcript, it may explain why PubMed:15256438 could not detect this protein on a Western blot.,PTM:Phosphorylated upon DNA damage, probably by ATM or ATR.,sequence Caution:Wrong choice of transcript.,similarity:Belongs to the DNA mismatch repair mutL/hexB family.,

Validation Data



Western blot analysis of lysates from KB cells, primary antibody was diluted at 1:1000, 4° over night



Immunohistochemical analysis of paraffin-embedded human uterus. 1, Antibody was diluted at 1:200(4° overnight). 2, Tris-EDTA,pH9.0 was used for antigen retrieval. 3,Secondary antibody was diluted at 1:200(room temperature, 45min).

Contact information

Orders: order.cn@immunoway.com
Support: support.cn@immunoway.com
Telephone: 400-8787-807(China)
Website: <http://www.immunoway.com.cn>
Address: 2200 Ringwood Ave San Jose, CA 95131 USA



Please scan the QR code to access additional product information:
PMS2L Rabbit pAb

