

CU024 Rabbit pAb

CatalogNo: YT6568

| Key Features

Host Species

- Rabbit

Reactivity

- Human

Applications

- WB

MW

- 15kD (Calculated)

Isotype

- IgG

| Recommended Dilution Ratios

WB 1:500-2000

| Storage

Storage*

-15°C to -25°C/1 year(Do not lower than -25°C)

Formulation

Liquid in PBS containing 50% glycerol, 0.5% BSA and 0.02% sodium azide.

| Basic Information

Clonality

Polyclonal

| Immunogen Information

Immunogen

Synthesized peptide derived from human CU024 AA range: 4-54

Specificity

This antibody detects endogenous levels of CU024 at Human

| Target Information

Gene name

LINC00114 C21orf24 NCRNA00114

Protein Name CU024

Organism

Gene ID

UniProt ID

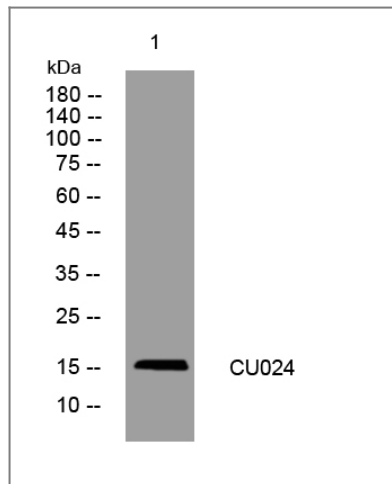
Human

[Q6XXX2](#);

Tissue specificity Expressed in a range of cell lines, including B-cell lymphoma and prostate.

Function Caution:Product of a dubious CDS prediction. Probable non-coding RNA. At least 6 alternative mRNA transcripts exist, with consensus splice donor and acceptor sites, but no coding potential nor murine ortholog. This protein sequence corresponds to the so-called isoforms C21orf24-6 and C21orf24-7.,tissue specificity:Expressed in a range of cell lines, including B-cell lymphoma and prostate.,

Validation Data



Western blot analysis of lysates from 293T cells, primary antibody was diluted at 1:1000, 4° over night

Contact information

Orders: order.cn@immunoway.com
Support: support.cn@immunoway.com
Telephone: 400-8787-807(China)
Website: <http://www.immunoway.com.cn>
Address: 2200 Ringwood Ave San Jose, CA 95131 USA



Please scan the QR code to access additional product information:
CU024 Rabbit pAb

For Research Use Only. Not for Use in Diagnostic Procedures.

[Antibody](#) | [ELISA Kits](#) | [Protein](#) | [Reagents](#)