

## GRHPR Rabbit pAb

CatalogNo: YT6566

### | Key Features

#### Host Species

- Rabbit

#### Reactivity

- Human, Mouse

#### Applications

- WB

#### MW

- 36kD (Calculated)

#### Isotype

- IgG

### | Recommended Dilution Ratios

WB 1:500-2000

### | Storage

**Storage\*** -15°C to -25°C/1 year (Do not lower than -25°C)

**Formulation** Liquid in PBS containing 50% glycerol, 0.5% BSA and 0.02% sodium azide.

### | Basic Information

**Clonality** Polyclonal

### | Immunogen Information

**Immunogen** Synthesized peptide derived from human GRHPR AA range: 151-201

**Specificity** This antibody detects endogenous levels of GRHPR at Human/Mouse

### | Target Information

**Gene name** GRHPR GLXR MSTP035

**Protein Name** GRHPR

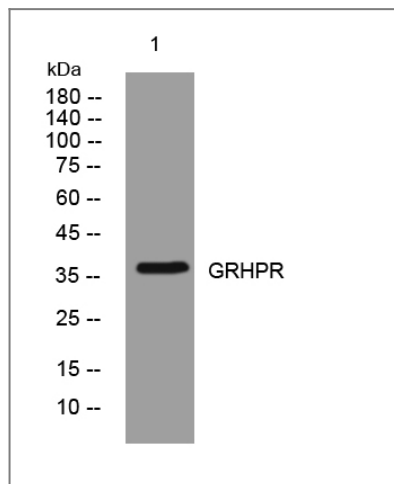
Organism	Gene ID	UniProt ID
Human	<a href="#">9380</a> ;	<a href="#">Q9UBQ7</a> ;
Mouse	<a href="#">76238</a> ;	<a href="#">Q91Z53</a> ;

**Cellular Localization** cytoplasm,peroxisomal matrix,cytosol,extracellular exosome,

**Tissue specificity** Ubiquitous. Most abundantly expressed in the liver.

**Function** Catalytic activity: Glycolate + NADP(+) = glyoxylate + NADPH.,Disease: Defects in GRHPR are the cause of hyperoxaluria primary type II (HP2) [MIM:260000]; also known as primary hyperoxaluria type II (PH2). HP2 is a disorder where the main clinical manifestation is calcium oxalate nephrolithiasis though chronic as well as terminal renal insufficiency has been described. It is characterized by an elevated urinary excretion of oxalate and L-glycerate.,Function: Enzyme with hydroxy-pyruvate reductase, glyoxylate reductase and D-glycerate dehydrogenase enzymatic activities.,similarity: Belongs to the D-isomer specific 2-hydroxyacid dehydrogenase family.,subunit: Monomer.,tissue specificity: Ubiquitous. Most abundantly expressed in the liver.,

## Validation Data



Western blot analysis of lysates from Jurkat cells, primary antibody was diluted at 1:1000, 4° over night

## Contact information

Orders: order.cn@immunoway.com  
Support: support.cn@immunoway.com  
Telephone: 400-8787-807(China)  
Website: <http://www.immunoway.com.cn>  
Address: 2200 Ringwood Ave San Jose, CA 95131 USA



Please scan the QR code to access additional product information:  
**GRHPR Rabbit pAb**

