

F166B Rabbit pAb

CatalogNo: YT6564

| Key Features

Host Species

- Rabbit

Reactivity

- Human, Mouse

Applications

- WB

MW

- 30kD (Calculated)

Isotype

- IgG

| Recommended Dilution Ratios

WB 1:500-2000

| Storage

Storage* -15°C to -25°C/1 year (Do not lower than -25°C)

Formulation Liquid in PBS containing 50% glycerol, 0.5% BSA and 0.02% sodium azide.

| Basic Information

Clonality Polyclonal

| Immunogen Information

Immunogen Synthesized peptide derived from human F166B AA range: 64-114

Specificity This antibody detects endogenous levels of F166B at Human/Mouse

| Target Information

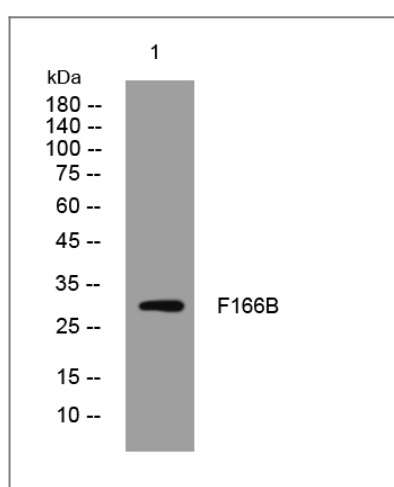
Gene name FAM166B

Protein Name F166B

Organism	Gene ID	UniProt ID
Human	730112 ;	A8MTA8 ;
Mouse	329831 ;	A2AIP0 ;

Function similarity:Belongs to the UPF0605 family.,

Validation Data



Western blot analysis of lysates from HEK293 cells, primary antibody was diluted at 1:1000, 4° over night

Contact information

Orders: order.cn@immunoway.com
Support: support.cn@immunoway.com
Telephone: 400-8787-807(China)
Website: <http://www.immunoway.com.cn>
Address: 2200 Ringwood Ave San Jose, CA 95131 USA



Please scan the QR code to access additional product information:
F166B Rabbit pAb

For Research Use Only. Not for Use in Diagnostic Procedures.

[Antibody](#) | [ELISA Kits](#) | [Protein](#) | [Reagents](#)