

NIT2 Rabbit pAb

CatalogNo: YT6539

| Key Features

Host Species

- Rabbit

Reactivity

- Human, Mouse, Rat

Applications

- WB

MW

- 30kD (Calculated)

Isotype

- IgG

| Recommended Dilution Ratios

WB 1:500-2000

| Storage

Storage* -15°C to -25°C/1 year (Do not lower than -25°C)

Formulation Liquid in PBS containing 50% glycerol, 0.5% BSA and 0.02% sodium azide.

| Basic Information

Clonality Polyclonal

| Immunogen Information

Immunogen Synthesized peptide derived from human NIT2 AA range: 200-250

Specificity This antibody detects endogenous levels of NIT2 at Human/Mouse/Rat

| Target Information

Gene name NIT2 CUA002

Protein Name NIT2

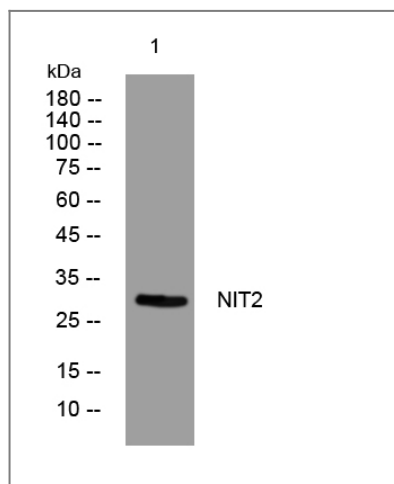
Organism	Gene ID	UniProt ID
Human	56954;	Q9NQR4;
Mouse	52633;	Q9JHW2;
Rat	288174;	Q497B0;

Cellular Localization Cytoplasm .

Tissue specificity Detected in fetal brain (at protein level). Ubiquitous. Detected in heart, brain, placenta, lung, liver, skeletal muscle, kidney, pancreas, prostate, spleen, thymus, prostate, testis, ovary, small intestine and colon.

Function Function:Overexpression decreases the colony-forming capacity of cultured cells by arresting cells in the G2 phase of the cell cycle.,mass spectrometry: PubMed:17488281,similarity:Belongs to the UPF0012 family.,similarity:Contains 1 CN hydrolase domain.,tissue specificity:Detected in fetal brain (at protein level). Ubiquitous. Detected in heart, brain, placenta, lung, liver, skeletal muscle, kidney, pancreas, prostate, spleen, thymus, prostate, testis, ovary, small intestine and colon.,

Validation Data



Western blot analysis of lysates from MCF-7 cells, primary antibody was diluted at 1:1000, 4° over night

Contact information

Orders: order.cn@immunoway.com
Support: support.cn@immunoway.com
Telephone: 400-8787-807(China)
Website: <http://www.immunoway.com.cn>
Address: 2200 Ringwood Ave San Jose, CA 95131 USA



Please scan the QR code to access additional product information:
NIT2 Rabbit pAb

