

## RINI Rabbit pAb

CatalogNo: YT6528

### Key Features

#### Host Species

- Rabbit

#### Reactivity

- Human, Mouse, Rat

#### Applications

- WB, IHC

#### MW

- 51kD (Calculated)

#### Isotype

- IgG

### Recommended Dilution Ratios

WB 1:500-2000

IHC 1:50-300

### Storage

**Storage\*** -15°C to -25°C/1 year (Do not lower than -25°C)

**Formulation** Liquid in PBS containing 50% glycerol, 0.5% BSA and 0.02% sodium azide.

### Basic Information

**Clonality** Polyclonal

### Immunogen Information

**Immunogen** Synthesized peptide derived from human RINI AA range: 273-323

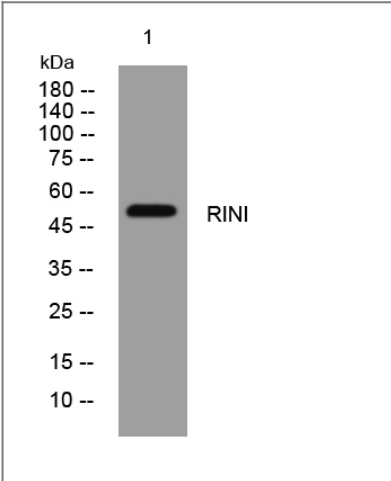
**Specificity** This antibody detects endogenous levels of RINI at Human/Mouse/Rat

### Target Information

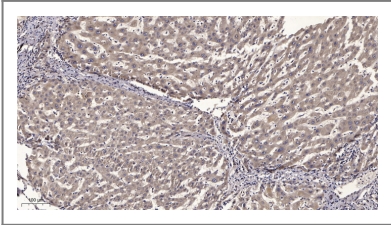
**Gene name** RNH1 PRI RNH

<b>Protein Name</b>	RINI		
	<b>Organism</b>	<b>Gene ID</b>	<b>UniProt ID</b>
	Human	<a href="#">6050;</a>	<a href="#">P13489;</a>
	Mouse	<a href="#">107702;</a>	<a href="#">Q91VI7;</a>
	Rat	<a href="#">100360501;</a>	<a href="#">P29315;</a>
<b>Cellular Localization</b>	Cytoplasm.		
<b>Function</b>	Function:Inhibitor of pancreatic RNase and angiogenin. May also function in the modulation of cellular activities.,PTM:At least 30 of the 32 cysteine residues are in the reduced form.,PTM:The N-terminus is blocked.,similarity:Contains 15 LRR (leucine-rich) repeats.,subunit:Forms a tight one-to-one complex with the RNase.,		

| Validation Data



Western blot analysis of lysates from PC-12 cells, primary antibody was diluted at 1:1000, 4°over night



Immunohistochemical analysis of paraffin-embedded human liver cancer. 1, Antibody was diluted at 1:200(4° overnight). 2, Tris-EDTA,pH9.0 was used for antigen retrieval. 3,Secondary antibody was diluted at 1:200(room temperature, 45min).

| Contact information

Orders: order.cn@immunoway.com  
Support: support.cn@immunoway.com  
Telephone: 400-8787-807(China)  
Website: <http://www.immunoway.com.cn>  
Address: 2200 Ringwood Ave San Jose, CA 95131 USA



Please scan the QR code  
to access additional  
product information:  
**RINI Rabbit pAb**

---

For Research Use Only. Not for Use in Diagnostic Procedures.

[Antibody](#) | [ELISA Kits](#) | [Protein](#) | [Reagents](#)