

## NPPL3 Rabbit pAb

CatalogNo: YT6476

### Key Features

#### Host Species

- Rabbit

#### Reactivity

- Human

#### Applications

- WB

#### MW

- 116kD (Calculated)

#### Isotype

- IgG

### Recommended Dilution Ratios

WB 1:500-2000

### Storage

**Storage\*** -15°C to -25°C/1 year(Do not lower than -25°C)

**Formulation** Liquid in PBS containing 50% glycerol, 0.5% BSA and 0.02% sodium azide.

### Basic Information

**Clonality** Polyclonal

### Immunogen Information

**Immunogen** Synthesized peptide derived from human NPPL3 AA range: 831-881

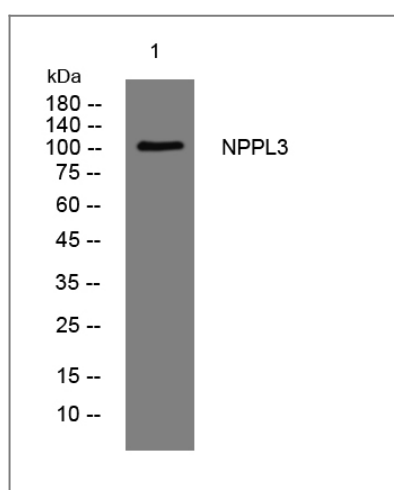
**Specificity** This antibody detects endogenous levels of NPPL3 at Human

### Target Information

**Gene name** NPIPL3 KIAA0220

<b>Protein Name</b>	NPPL3		
	<b>Organism</b>	<b>Gene ID</b>	<b>UniProt ID</b>
	Human	<a href="#">23117</a> ;	<a href="#">Q92617</a> ;
<b>Cellular Localization</b>	Membrane ; Single-pass membrane protein .		
<b>Function</b>	Caution:Could be the product of a pseudogene.,similarity:Belongs to the NPIP family.,		

## Validation Data



Western blot analysis of lysates from AD293 cells, primary antibody was diluted at 1:1000, 4°over night

## Contact information

Orders: [order.cn@immunoway.com](mailto:order.cn@immunoway.com)  
 Support: [support.cn@immunoway.com](mailto:support.cn@immunoway.com)  
 Telephone: 400-8787-807(China)  
 Website: <http://www.immunoway.com.cn>  
 Address: 2200 Ringwood Ave San Jose, CA 95131 USA



Please scan the QR code to access additional product information:  
**NPPL3 Rabbit pAb**

For Research Use Only. Not for Use in Diagnostic Procedures.

[Antibody](#) | [ELISA Kits](#) | [Protein](#) | [Reagents](#)