

HPLN3 Rabbit pAb

CatalogNo: YT6469

Key Features

Host Species

- Rabbit

Reactivity

- Human, Mouse

Applications

- WB

MW

- 40kD (Calculated)

Isotype

- IgG

Recommended Dilution Ratios

WB 1:500-2000

Storage

Storage* -15°C to -25°C/1 year (Do not lower than -25°C)

Formulation Liquid in PBS containing 50% glycerol, 0.5% BSA and 0.02% sodium azide.

Basic Information

Clonality Polyclonal

Immunogen Information

Immunogen Synthesized peptide derived from human HPLN3 AA range: 87-137

Specificity This antibody detects endogenous levels of HPLN3 at Human/Mouse

Target Information

Gene name HAPLN3 EXLD1 UNQ238/PRO271

Protein Name HPLN3

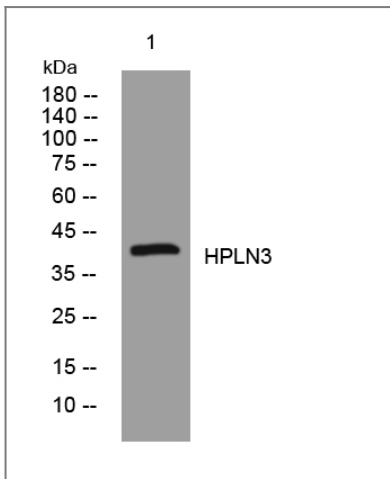
Organism	Gene ID	UniProt ID
Human	145864 ;	Q96S86 ;
Mouse	67666 ;	Q80WM5 ;

Cellular Localization Secreted, extracellular space, extracellular matrix .

Tissue specificity Widely expressed with highest levels in spleen and placenta.

Function Function:May function in hyaluronic acid binding.,similarity:Belongs to the HAPLN family.,similarity:Contains 1 Ig-like V-type (immunoglobulin-like) domain.,similarity:Contains 2 Link domains.,tissue specificity:Widely expressed with highest levels in spleen and placenta.,

Validation Data



Western blot analysis of lysates from 293T cells, primary antibody was diluted at 1:1000, 4° over night

Contact information

Orders: order.cn@immunoway.com
Support: support.cn@immunoway.com
Telephone: 400-8787-807(China)
Website: <http://www.immunoway.com.cn>
Address: 2200 Ringwood Ave San Jose, CA 95131 USA



Please scan the QR code to access additional product information:
HPLN3 Rabbit pAb