

## MPPB Rabbit pAb

CatalogNo: YT6459

### Key Features

#### Host Species

- Rabbit

#### Reactivity

- Human, Mouse, Rat

#### Applications

- WB, IHC

#### MW

- 54kD (Calculated)

#### Isotype

- IgG

### Recommended Dilution Ratios

WB 1:500-2000

IHC 1:50-300

### Storage

#### Storage\*

-15°C to -25°C/1 year (Do not lower than -25°C)

#### Formulation

Liquid in PBS containing 50% glycerol, 0.5% BSA and 0.02% sodium azide.

### Basic Information

#### Clonality

Polyclonal

### Immunogen Information

#### Immunogen

Synthesized peptide derived from human MPPB AA range: 92-142

#### Specificity

This antibody detects endogenous levels of MPPB at Human/Mouse/Rat

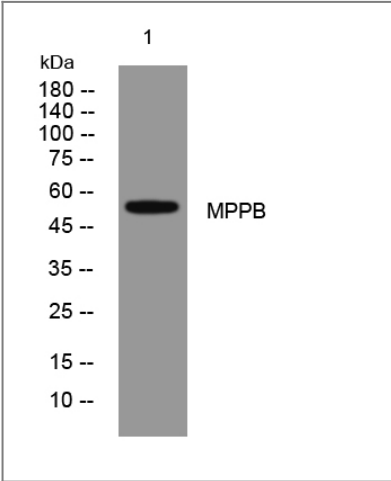
### Target Information

#### Gene name

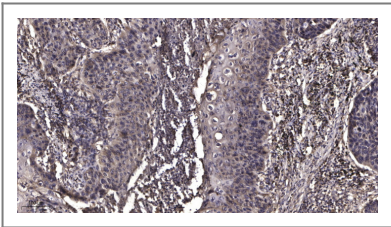
PMPCB MPPB

|                       |   |                        |                         |
|-----------------------|---|------------------------|-------------------------|
| Protein Name          | MPPB  |                        |                         |
|                       | Organism  | Gene ID                | UniProt ID              |
|                       | Human   | <a href="#">9512;</a>  | <a href="#">075439;</a> |
|                       | Mouse   | <a href="#">73078;</a> | <a href="#">Q9CXT8;</a> |
|                       | Rat   | <a href="#">64198;</a> | <a href="#">Q03346;</a> |
|                       |   |                        |                         |
| Cellular Localization | Mitochondrion matrix .  |                        |                         |
| Function              | Catalytic activity:Release of N-terminal transit peptides from precursor proteins imported into the mitochondrion, typically with Arg in position P2.,cofactor:Binds 1 zinc ion per subunit.,Function:Cleaves presequences (transit peptides) from mitochondrial protein precursors.,similarity:Belongs to the peptidase M16 family.,subunit:Heterodimer of alpha and beta subunits., |                        |                         |

| Validation Data



Western blot analysis of lysates from 293T cells, primary antibody was diluted at 1:1000, 4°over night



Immunohistochemical analysis of paraffin-embedded human Squamous cell carcinoma of lung. 1, Antibody was diluted at 1:200(4° overnight). 2, Tris-EDTA,pH9.0 was used for antigen retrieval. 3,Secondary antibody was diluted at 1:200(room temperature, 45min).

| Contact information

Orders: order.cn@immunoway.com  
Support: support.cn@immunoway.com  
Telephone: 400-8787-807(China)  
Website: <http://www.immunoway.com.cn>  
Address: 2200 Ringwood Ave San Jose, CA 95131 USA



Please scan the QR code  
to access additional  
product information:  
**MPPB Rabbit pAb**

---

For Research Use Only. Not for Use in Diagnostic Procedures.

[Antibody](#) | [ELISA Kits](#) | [Protein](#) | [Reagents](#)