

## HMBX1 Rabbit pAb

CatalogNo: YT6436

### | Key Features

#### Host Species

- Rabbit

#### Reactivity

- Human, Mouse

#### Applications

- WB

#### MW

- 46kD (Calculated)

#### Isotype

- IgG

### | Recommended Dilution Ratios

WB 1:500-2000

### | Storage

**Storage\*** -15°C to -25°C/1 year (Do not lower than -25°C)

**Formulation** Liquid in PBS containing 50% glycerol, 0.5% BSA and 0.02% sodium azide.

### | Basic Information

**Clonality** Polyclonal

### | Immunogen Information

**Immunogen** Synthesized peptide derived from human HMBX1 AA range: 169-219

**Specificity** This antibody detects endogenous levels of HMBX1 at Human/Mouse

### | Target Information

**Gene name** HMBX1

**Protein Name** HMBX1

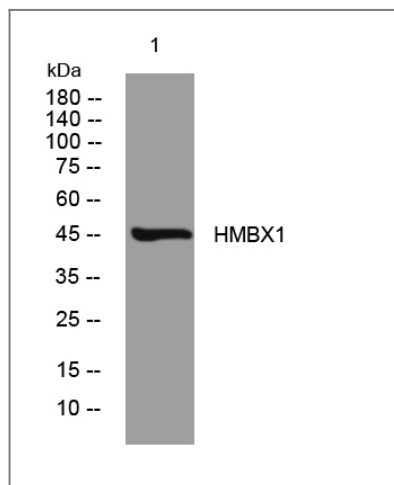
Organism	Gene ID	UniProt ID
Human	<a href="#">79618</a> ;	<a href="#">Q6NT76</a> ;
Mouse	<a href="#">219150</a> ;	<a href="#">Q8BJA3</a> ;

**Cellular Localization** Nucleus . Cytoplasm . Chromosome, telomere . Nucleus, Cajal body . Nucleus, PML body . Predominantly detected in cytoplasm (PubMed:16825764, PubMed:19728927). Localizes in a dynamic manner to actively processed telomeres (PubMed:23685356). Localizes to the periphery of Cajal bodies (PubMed:23685356). Associates with PML nuclear bodies in telomerase-negative cells (PubMed:23813958). .; [Isoform 5]: Nucleus . Cytoplasm .

**Tissue specificity** Ubiquitous. Detected in pancreas, brain, spleen, placenta, prostate, thymus, liver, heart, bone marrow, skeletal muscle, stomach, uterus, testis, kidney, ovary, colon, lung, cardiac muscle and thyroid gland.

**Function** Function:Putative transcription factor .,similarity:Contains 1 homeobox DNA-binding domain.,

## Validation Data



Western blot analysis of lysates from HpeG2 cells, primary antibody was diluted at 1:1000, 4°over night

## Contact information

Orders: order.cn@immunoway.com  
Support: support.cn@immunoway.com  
Telephone: 400-8787-807(China)  
Website: <http://www.immunoway.com.cn>  
Address: 2200 Ringwood Ave San Jose, CA 95131 USA



Please scan the QR code to access additional product information:  
**HMBX1 Rabbit pAb**

