

OSBL8 Rabbit pAb

CatalogNo: YT6409

Key Features

Host Species

- Rabbit

Reactivity

- Human, Mouse

Applications

- WB

MW

- 98kD (Calculated)

Isotype

- IgG

Storage

Storage* -15°C to -25°C/1 year (Do not lower than -25°C)

Formulation Liquid in PBS containing 50% glycerol, 0.5% BSA and 0.02% sodium azide.

Recommended Dilution Ratios

WB 1:500-2000

Basic Information

Clonality Polyclonal

Immunogen Information

Immunogen Synthesized peptide derived from human OSBL8 AA range: 290-340

Specificity This antibody detects endogenous levels of OSBL8 at Human

Target Information

Gene name OSBPL8 KIAA1451 ORP8 OSBP10

Protein Name OSBL8

Organism

Human

Gene ID

[114882;](#)

UniProt ID

[Q9BZF1;](#)

Cellular Localization

[Isoform 1]: Endoplasmic reticulum membrane ; Single-pass membrane protein . Nucleus membrane . The presence of the N-terminus extension contains an overall negative charge that may explain the weak localization to the cortical endoplasmic reticulum (Probable). . ; [Isoform 3]: Endoplasmic reticulum membrane ; Single-pass membrane protein. Localizes to the cortical endoplasmic reticulum at the endoplasmic reticulum-plasma membrane contact sites. .

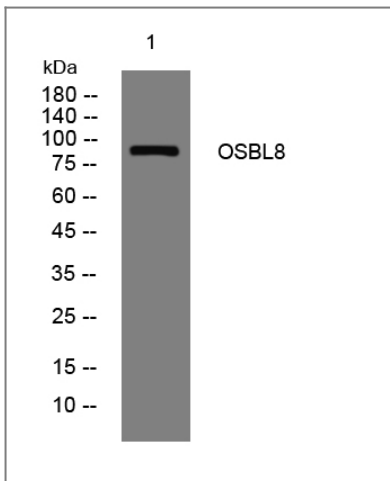
Tissue specificity

Widely expressed (PubMed:11735225). Expressed at higher level in macrophages (PubMed:17991739).

Function

similarity:Belongs to the OSBP family.,similarity:Contains 1 PH domain.,tissue specificity:Widely expressed.,

Validation Data



Western blot analysis of lysates from CACO2 cells, primary antibody was diluted at 1:1000, 4° over night

Contact information

Orders: order.cn@immunoway.com
Support: support.cn@immunoway.com
Telephone: 400-8787-807(China)
Website: <http://www.immunoway.com.cn>
Address: 2200 Ringwood Ave San Jose, CA 95131 USA



Please scan the QR code to access additional product information:
OSBL8 Rabbit pAb