

PPR37 Rabbit pAb

CatalogNo: YT6383

Key Features

Host Species

- Rabbit

Reactivity

- Human, Mouse, Rat

Applications

- WB

MW

- 76kD (Calculated)

Isotype

- IgG

Storage

Storage* -15°C to -25°C/1 year (Do not lower than -25°C)

Formulation Liquid in PBS containing 50% glycerol, 0.5% BSA and 0.02% sodium azide.

Recommended Dilution Ratios

WB 1:500-2000

Basic Information

Clonality Polyclonal

Immunogen Information

Immunogen Synthesized peptide derived from human PPR37 AA range: 15-65

Specificity This antibody detects endogenous levels of PPR37 at Human/Mouse/Rat

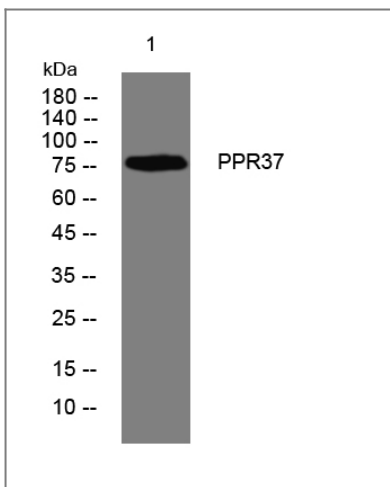
Target Information

Gene name PPP1R37 KIAA1986 LRRC68

Protein Name PPR37

Organism	Gene ID	UniProt ID
Human	284352 ;	O75864 ;
Mouse	232947 ;	Q8BKR5 ;
Rat	308398 ;	B2RYF1 ;

Validation Data



Western blot analysis of lysates from A431 cells, primary antibody was diluted at 1:1000, 4° over night

Contact information

Orders: order.cn@immunoway.com
Support: support.cn@immunoway.com
Telephone: 400-8787-807(China)
Website: <http://www.immunoway.com.cn>
Address: 2200 Ringwood Ave San Jose, CA 95131 USA



Please scan the QR code to access additional product information:
PPR37 Rabbit pAb

For Research Use Only. Not for Use in Diagnostic Procedures.

[Antibody](#) | [ELISA Kits](#) | [Protein](#) | [Reagents](#)