

REN3A Rabbit pAb

CatalogNo: YT6368

Key Features

Host Species

- Rabbit

Reactivity

- Human

Applications

- WB,IHC

MW

- 52kD (Calculated)

Isotype

- IgG

Storage

Storage* -15°C to -25°C/1 year(Do not lower than -25°C)

Formulation Liquid in PBS containing 50% glycerol, 0.5% BSA and 0.02% sodium azide.

Recommended Dilution Ratios

WB 1:500-2000

IHC 1:50-300

Basic Information

Clonality Polyclonal

Immunogen Information

Immunogen Synthesized peptide derived from human REN3A AA range: 190-240

Specificity This antibody detects endogenous levels of REN3A at Human

Target Information

Gene name UPF3A RENT3A UPF3

Protein Name REN3A

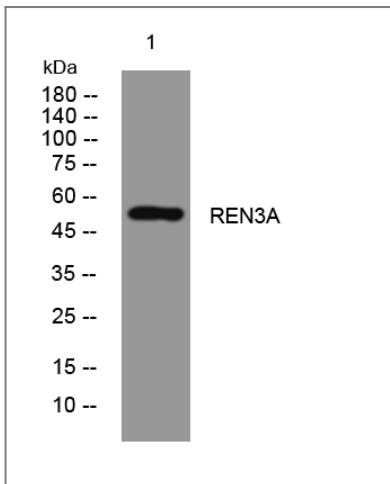
Organism	Gene ID	UniProt ID
Human	65110 ;	Q9H1J1 ;

Cellular Localization Nucleus . Cytoplasm . Shuttling between the nucleus and the cytoplasm. .

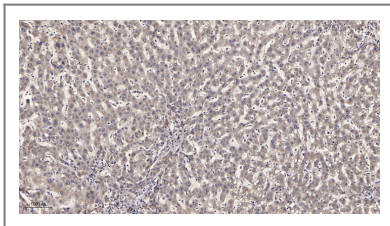
Tissue specificity Isoform 1 is strongly expressed in testis, uterus, muscle, fetal brain and spinal cord. Isoform 2 is strongly expressed in fetal brain and spinal cord.

Function Function:Part of a multiprotein post-splicing mRNP complex involved in both mRNA nuclear export and mRNA surveillance. Involved in nonsense-mediated decay (NMD) of mRNAs containing premature stop codons. Binds spliced mRNA upstream of exon-exon junctions.,similarity:Belongs to the RENT3 family.,subcellular location:Shuttling between the nucleus and the cytoplasm.,subunit:Found in a mRNP complex with RENT1, RENT2, RENT3A and RENT3B. Found in a mRNP complex with SMG1, RENT3A, RENT3B, RBM8A, THOC4 and NXF1. Found in a post-splicing complex with NXF1, RBM8A, RENT1, RENT2, RENT3A, RENT3B and RNPS1. Interacts with RENT2.,tissue specificity:Isoform 1 is strongly expressed in testis, uterus, muscle, fetal brain and spinal cord. Isoform 2 is strongly expressed in fetal brain and spinal cord.,

Validation Data



Western blot analysis of lysates from 293T cells, primary antibody was diluted at 1:1000, 4° over night



Immunohistochemical analysis of paraffin-embedded human liver cancer. 1, Antibody was diluted at 1:200(4° overnight). 2, Tris-EDTA,pH9.0 was used for antigen retrieval. 3,Secondary antibody was diluted at 1:200(room temperature, 45min).

Contact information

Orders: order.cn@immunoway.com
Support: support.cn@immunoway.com
Telephone: 400-8787-807(China)
Website: <http://www.immunoway.com.cn>
Address: 2200 Ringwood Ave San Jose, CA 95131 USA



Please scan the QR code
to access additional
product information:
REN3A Rabbit pAb

For Research Use Only. Not for Use in Diagnostic Procedures.

[Antibody](#) | [ELISA Kits](#) | [Protein](#) | [Reagents](#)