

SHOX2 Rabbit pAb

CatalogNo: YT6364

Orthogonal Validated 

Key Features

Host Species

- Rabbit

Reactivity

- Human, Mouse, Rat

Applications

- WB, IHC, FC

MW

- 36kD (Calculated)

Isotype

- IgG

Recommended Dilution Ratios

WB 1:500-2000

IHC 1:50-300, Flow Cyt 1:100-200

Storage

Storage* -15°C to -25°C/1 year (Do not lower than -25°C)**Formulation** Liquid in PBS containing 50% glycerol, 0.5% BSA and 0.02% sodium azide.

Basic Information

Clonality Polyclonal

Immunogen Information

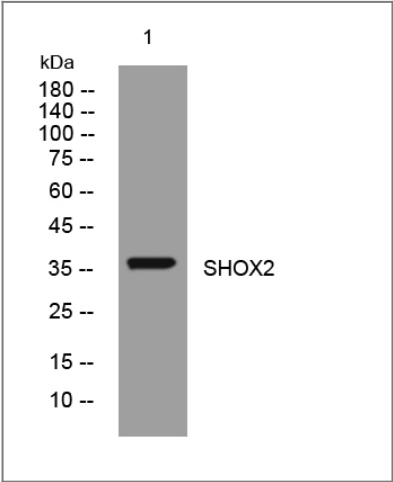
Immunogen Synthesized peptide derived from human SHOX2 AA range: 37-87**Specificity** This antibody detects endogenous levels of SHOX2 at Human/Mouse/Rat

Target Information

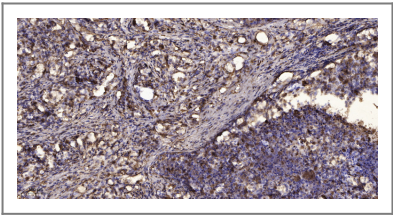
Gene name SHOX2 OG12X SHOT

Protein Name	SHOX2		
	Organism	Gene ID	UniProt ID
	Human	6474;	O60902;
	Mouse	20429;	P70390;
	Rat	25546;	O35750;
Cellular Localization	Nucleus.		
Tissue specificity	Expressed in heart, skeletal muscle, liver, lung, bone marrow fibroblast, pancreas and placenta.		
Function	developmental stage:Expressed during cranofacial development as well as in heart.,Function:May be a growth regulator and have a role in specifying neural systems involved in processing somatosensory information, as well as in face and body structure formation.,similarity:Belongs to the paired homeobox family. Bicoid subfamily.,similarity:Contains 1 homeobox DNA-binding domain.,similarity:Contains 1 OAR domain.,tissue specificity:Expressed in heart, skeletal muscle, liver, lung, bone marrow fibroblast, pancreas and placenta.,		

| Validation Data



Western blot analysis of lysates from Hela cells, primary antibody was diluted at 1:1000, 4°over night



Immunohistochemical analysis of paraffin-embedded human Squamous cell carcinoma of lung. 1, Antibody was diluted at 1:200(4° overnight). 2, Tris-EDTA,pH9.0 was used for antigen retrieval. 3,Secondary antibody was diluted at 1:200(room temperature, 45min).

| Contact information

Orders: order.cn@immunoway.com
Support: support.cn@immunoway.com
Telephone: 400-8787-807(China)
Website: <http://www.immunoway.com.cn>
Address: 2200 Ringwood Ave San Jose, CA 95131 USA



Please scan the QR code
to access additional
product information:
SHOX2 Rabbit pAb

For Research Use Only. Not for Use in Diagnostic Procedures.

[Antibody](#) | [ELISA Kits](#) | [Protein](#) | [Reagents](#)