

TYB10 Rabbit pAb

CatalogNo: YT6361

Key Features

Host Species

- Rabbit

Reactivity

- Human, Mouse, Rat

Applications

- IHC, IF

MW

- 5kD (Calculated)

Isotype

- IgG

Recommended Dilution Ratios

IHC 1:50-200

IF 1:50-200

Storage

Storage* -15°C to -25°C/1 year (Do not lower than -25°C)

Formulation Liquid in PBS containing 50% glycerol, 0.5% BSA and 0.02% sodium azide.

Basic Information

Clonality Polyclonal

Immunogen Information

Immunogen Synthesized peptide derived from human TYB10 AA range: 1-24

Specificity This antibody detects endogenous levels of TYB10 at Human/Mouse/Rat

Target Information

Gene name TMSB10 PTMB10 THYB10

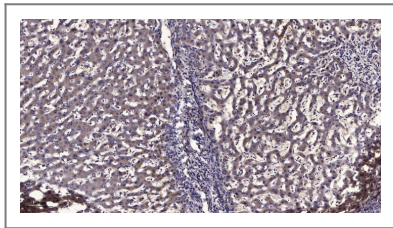
Protein Name TYB10

Organism	Gene ID	UniProt ID
Human	9168;	P63313;
Mouse	19240;	Q6ZWY8;
Rat	100364435;	P63312;

Cellular Localization Cytoplasm, cytoskeleton.

Function developmental stage:Found to decrease dramatically after birth.,Function:Plays an important role in the organization of the cytoskeleton. Binds to and sequesters actin monomers (G actin) and therefore inhibits actin polymerization.,similarity:Belongs to the thymosin beta family.,

Validation Data



Immunohistochemical analysis of paraffin-embedded human liver cancer. 1, Antibody was diluted at 1:200(4° overnight). 2, Tris-EDTA,pH9.0 was used for antigen retrieval. 3,Secondary antibody was diluted at 1:200(room temperature, 45min).

Contact information

Orders: order.cn@immunoway.com
Support: support.cn@immunoway.com
Telephone: 400-8787-807(China)
Website: <http://www.immunoway.com.cn>
Address: 2200 Ringwood Ave San Jose, CA 95131 USA



Please scan the QR code to access additional product information:
TYB10 Rabbit pAb

For Research Use Only. Not for Use in Diagnostic Procedures.

[Antibody](#) | [ELISA Kits](#) | [Protein](#) | [Reagents](#)