

## F207A Rabbit pAb

CatalogNo: YT6331

### Key Features

#### Host Species

- Rabbit

#### Reactivity

- Human, Mouse

#### Applications

- WB

#### MW

- 25kD (Calculated)

#### Isotype

- IgG

### Recommended Dilution Ratios

WB 1:500-2000

### Storage

#### Storage\*

-15°C to -25°C/1 year (Do not lower than -25°C)

#### Formulation

Liquid in PBS containing 50% glycerol, 0.5% BSA and 0.02% sodium azide.

### Basic Information

#### Clonality

Polyclonal

### Immunogen Information

#### Immunogen

Synthesized peptide derived from human F207A AA range: 29-79

#### Specificity

This antibody detects endogenous levels of F207A at Human/Mouse

### Target Information

#### Gene name

FAM207A C21orf70 PRED56

**Protein Name** F207A

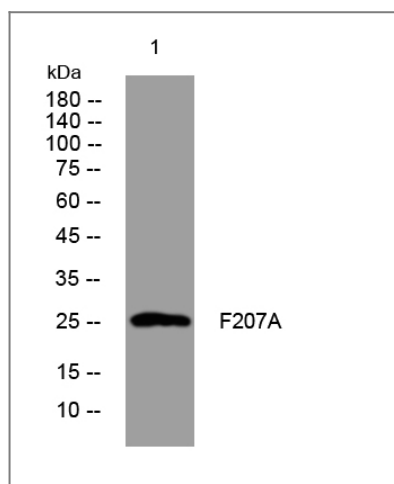
Organism	Gene ID	UniProt ID
Human	<a href="#">85395;</a>	<a href="#">Q9NSI2;</a>
Mouse	<a href="#">108707;</a>	<a href="#">P58468;</a>

**Cellular Localization** Nucleus, nucleolus .

**Tissue specificity** Not detected in any tested tissue.

**Function** tissue specificity:Not detected in any tested tissue.,

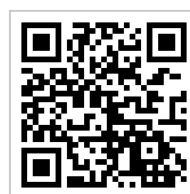
## Validation Data



Western blot analysis of lysates from U2OS cells, primary antibody was diluted at 1:1000, 4°over night

## Contact information

Orders: order.cn@immunoway.com  
Support: support.cn@immunoway.com  
Telephone: 400-8787-807(China)  
Website: <http://www.immunoway.com.cn>  
Address: 2200 Ringwood Ave San Jose, CA 95131 USA



Please scan the QR code to access additional product information:  
**F207A Rabbit pAb**