

## ADR1 Rabbit pAb

CatalogNo: YT6316

### | Key Features

#### Host Species

- Rabbit

#### Reactivity

- Human, Mouse

#### Applications

- WB

#### MW

- 41kD (Calculated)

#### Isotype

- IgG

### | Recommended Dilution Ratios

WB 1:500-2000

### | Storage

**Storage\*** -15°C to -25°C/1 year (Do not lower than -25°C)

**Formulation** Liquid in PBS containing 50% glycerol, 0.5% BSA and 0.02% sodium azide.

### | Basic Information

**Clonality** Polyclonal

### | Immunogen Information

**Immunogen** Synthesized peptide derived from human ADR1 AA range: 277-327

**Specificity** This antibody detects endogenous levels of ADR1 at Human/Mouse

### | Target Information

**Gene name** ADIPOR1 PAQR1 TESBP1A CGI-45

**Protein Name**      ADR1

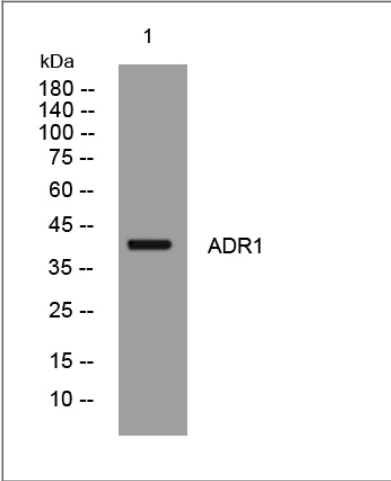
Organism	Gene ID	UniProt ID
Human	<a href="#">51094;</a>	<a href="#">Q96A54;</a>
Mouse	<a href="#">72674;</a>	<a href="#">Q91VH1;</a>

**Cellular Localization**      Cell membrane ; Multi-pass membrane protein . Localized to the cell membrane and intracellular organelles. .

**Tissue specificity**      Widely expressed (PubMed:16044242). Highly expressed in heart and skeletal muscle (PubMed:12802337). Expressed at intermediate level in brain, spleen, kidney, liver, placenta, lung and peripheral blood leukocytes (PubMed:12802337). Weakly expressed in colon, thymus and small intestine (PubMed:12802337).

**Function**      Function:Receptor for globular and full-length adiponectin (APM1), an essential hormone secreted by adipocytes that acts as an antidiabetic. Probably involved in metabolic pathways that regulate lipid metabolism such as fatty acid oxidation. Mediates increased AMPK, PPARA ligand activity, fatty acid oxidation and glucose uptake by adiponectin. Has some high-affinity receptor for globular adiponectin but low-affinity receptor for full-length adiponectin.,similarity:Belongs to the ADIPOR family.,subcellular location:Localized to the cell membrane and intracellular organelles.,subunit:May form homo and heteromultimers.,tissue specificity:Widely expressed. Highly expressed in skeletal muscle. Expressed at intermediate level in brain, heart, spleen, kidney, liver, placenta, lung and peripheral blood leukocytes. Weakly expressed in colon, thymus and small intestine.,

| Validation Data



Western blot analysis of lysates from AD293 cells, primary antibody was diluted at 1:1000, 4°over night

| Contact information

Orders: order.cn@immunoway.com  
Support: support.cn@immunoway.com  
Telephone: 400-8787-807(China)  
Website: <http://www.immunoway.com.cn>  
Address: 2200 Ringwood Ave San Jose, CA 95131 USA



Please scan the QR code  
to access additional  
product information:  
**ADR1 Rabbit pAb**

---

For Research Use Only. Not for Use in Diagnostic Procedures.

[Antibody](#) | [ELISA Kits](#) | [Protein](#) | [Reagents](#)