

STRUM Rabbit pAb

CatalogNo: YT6309

Key Features

Host Species

- Rabbit

Reactivity

- Human, Mouse

Applications

- WB, IHC

MW

- 127kD (Calculated)

Isotype

- IgG

Recommended Dilution Ratios

WB 1:500-2000**IHC 1:50-300**

Storage

Storage*

-15°C to -25°C/1 year (Do not lower than -25°C)

Formulation

Liquid in PBS containing 50% glycerol, 0.5% BSA and 0.02% sodium azide.

Basic Information

Clonality

Polyclonal

Immunogen Information

Immunogen

Synthesized peptide derived from human STRUM AA range: 515-565

Specificity

This antibody detects endogenous levels of STRUM at Human/Mouse

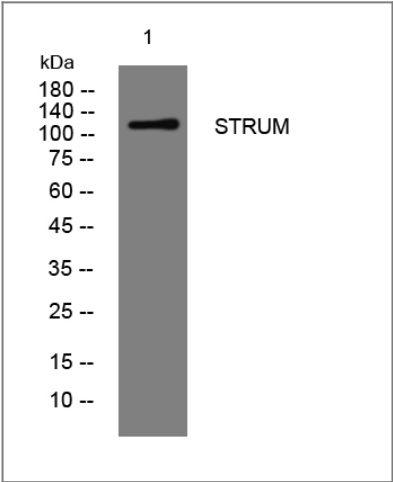
Target Information

Gene name

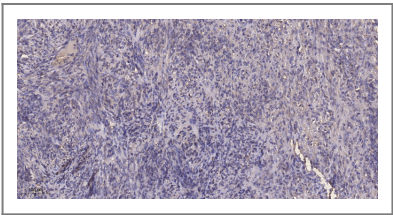
KIAA0196

Protein Name	STRUM		
	Organism	Gene ID	UniProt ID
	Human	9897;	Q12768;
	Mouse	223593;	Q8C2E7;
Cellular Localization	Cytoplasm, cytosol . Endoplasmic reticulum . Early endosome . Colocalizes with SYP/synaptophysin in the external molecular layer of the dentate gyrus and in motoneurons of the ventral horn of spinal cord. .		
Tissue specificity	Expressed ubiquitously.		
Function	Disease:Defects in KIAA0196 are the cause of spastic paraplegia autosomal dominant type 8 (SPG8) [MIM:603563]. Spastic paraplegia is a neurodegenerative disorder characterized by a slow, gradual, progressive weakness and spasticity of the lower limbs. Spastic paraplegia is a neurodegenerative disorder characterized by a slow, gradual, progressive weakness and spasticity of the lower limbs. Rate of progression and the severity of symptoms are quite variable. Initial symptoms may include difficulty with balance, weakness and stiffness in the legs, muscle spasms, and dragging the toes when walking. In some forms of the disorder, bladder symptoms (such as incontinence) may appear, or the weakness and stiffness may spread to other parts of the body.,similarity:Belongs to the strumpellin family.,tissue specificity:Expressed ubiquitously.,		

Validation Data



Western blot analysis of lysates from THP-1 cells, primary antibody was diluted at 1:1000, 4°over night



Immunohistochemical analysis of paraffin-embedded human Colon cancer. 1, Antibody was diluted at 1:200(4° overnight). 2, Tris-EDTA,pH9.0 was used for antigen retrieval. 3,Secondary antibody was diluted at 1:200(room temperature, 45min).

Contact information

Orders: order.cn@immunoway.com
Support: support.cn@immunoway.com
Telephone: 400-8787-807(China)
Website: <http://www.immunoway.com.cn>
Address: 2200 Ringwood Ave San Jose, CA 95131 USA



Please scan the QR code
to access additional
product information:
STRUM Rabbit pAb

For Research Use Only. Not for Use in Diagnostic Procedures.

[Antibody](#) | [ELISA Kits](#) | [Protein](#) | [Reagents](#)