

## ITF Rabbit pAb

CatalogNo: YT6276

### Key Features

#### Host Species

- Rabbit

#### Reactivity

- Human,Rat,Mouse,

#### Applications

- IHC,ELISA

#### Isotype

- IgG

### Recommended Dilution Ratios

IHC 1:50-200

ELISA(peptide)1:5000-20000

### Storage

**Storage\*** -15°C to -25°C/1 year(Do not lower than -25°C)

**Formulation** Liquid in PBS containing 50% glycerol, 0.5% BSA and 0.02% sodium azide.

### Basic Information

**Clonality** Polyclonal

### Immunogen Information

**Immunogen** Synthesized peptide derived from human ITF Polyclonal AA range: 1-50

**Specificity** This antibody detects endogenous levels of human ITF Polyclonal

### Target Information

**Gene name** TFF3 ITF TFI

**Protein Name**

ITF Polyclonal

**Organism**

Human

**Gene ID**[7033;](#)**UniProt ID**[Q07654;](#)**Cellular  
Localization**

Secreted, extracellular space, extracellular matrix . Cytoplasm .

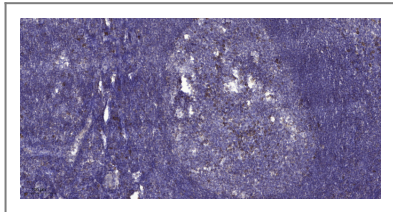
**Tissue specificity**

Expressed in goblet cells of the intestines and colon (at protein level). Expressed by goblet cells of small and large intestinal epithelia and also by the uterus. Also expressed in the hypothalamus where it is detected in paraventricular, periventricular and supraoptic nuclei (at protein level).

**Function**

Function:Involved in the maintenance and repair of the intestinal mucosa. Promotes the mobility of epithelial cells in healing processes (motogen).,similarity:Contains 1 P-type (trefoil) domain.,subunit:Monomer. Homodimer; disulfide-linked.,tissue specificity:Expressed in goblet cells of the intestines and colon (at protein level). Expressed by goblet cells of small and large intestinal epithelia and also by the uterus.,

## | Validation Data



Immunohistochemical analysis of paraffin-embedded human tonsil. 1, Antibody was diluted at 1:200(4° overnight). 2, Tris-EDTA,pH9.0 was used for antigen retrieval. 3,Secondary antibody was diluted at 1:200(room temperature, 30min).

## | Contact information

Orders: order.cn@immunoway.com  
Support: support.cn@immunoway.com  
Telephone: 400-8787-807(China)  
Website: <http://www.immunoway.com.cn>  
Address: 2200 Ringwood Ave San Jose, CA 95131 USA



Please scan the QR code  
to access additional  
product information:  
**ITF Rabbit pAb**

For Research Use Only. Not for Use in Diagnostic Procedures.

[Antibody](#) | [ELISA Kits](#) | [Protein](#) | [Reagents](#)