

Beta-defensin 4A Rabbit pAb

CatalogNo: YT6274

| Key Features

Host Species

- Rabbit

Reactivity

- Human

Applications

- IHC,ELISA

Isotype

- IgG

| Recommended Dilution Ratios

IHC 1:50-200

ELISA(peptide)1:5000-20000

| Storage

Storage* -15°C to -25°C/1 year(Do not lower than -25°C)

Formulation Liquid in PBS containing 50% glycerol, 0.5% BSA and 0.02% sodium azide.

| Basic Information

Clonality Polyclonal

| Immunogen Information

Immunogen Synthesized peptide derived from human Beta-defensin 4A AA range: 1-50

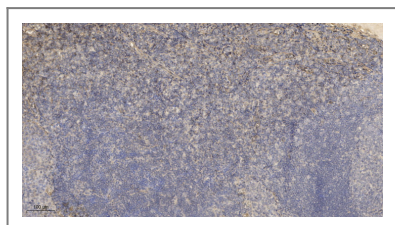
Specificity This antibody detects endogenous levels of human Beta-defensin 4A

| Target Information

Gene name DEFB4A DEFB102 DEFB2 DEFB4; DEFB4B

Protein Name	Beta-defensin 4A		
	Organism	Gene ID	UniProt ID
	Human	100289462 ;	O15263 ;
Cellular Localization	Secreted.		
Tissue specificity	Expressed in the skin and respiratory tract.		
Function	Function:Has antibacterial activity .,induction:By inflammation.,similarity:Belongs to the beta-defensin family. LAP/TAP subfamily.,tissue specificity:Expressed in the skin and respiratory tract.,		

| Validation Data



Immunohistochemical analysis of paraffin-embedded human tonsil. 1, Antibody was diluted at 1:200(4° overnight). 2, Tris-EDTA,pH9.0 was used for antigen retrieval. 3,Secondary antibody was diluted at 1:200(room temperature, 30min).

| Contact information

Orders: order.cn@immunoway.com
 Support: support.cn@immunoway.com
 Telephone: 400-8787-807(China)
 Website: <http://www.immunoway.com.cn>
 Address: 2200 Ringwood Ave San Jose, CA 95131 USA



Please scan the QR code
 to access additional
 product information:
Beta-defensin 4A
Rabbit pAb

For Research Use Only. Not for Use in Diagnostic Procedures.

[Antibody](#) | [ELISA Kits](#) | [Protein](#) | [Reagents](#)