

Cyclin T2 Rabbit pAb

CatalogNo: YT6222

| Key Features

Host Species

- Rabbit

Reactivity

- Human, Mouse, Rat

Applications

- IHC, IF, WB

MW

- 73kD (Observed)

Isotype

- IgG

| Recommended Dilution Ratios

IHC 1:50-200

WB 1:500-2000

IF 1:50-200

| Storage

Storage*

-15°C to -25°C/1 year (Do not lower than -25°C)

Formulation

Liquid in PBS containing 50% glycerol, 0.5% BSA and 0.02% sodium azide.

| Basic Information

Clonality

Polyclonal

| Immunogen Information

Immunogen

Synthesized peptide derived from human Cyclin T2 AA range: 510-590

Specificity

This antibody detects endogenous levels of human Cyclin T2

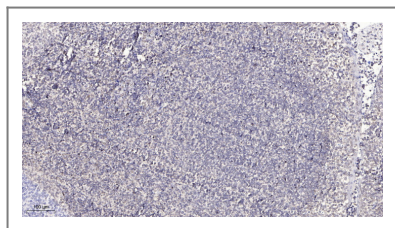
| Target Information

Gene name

CCNT2

| | | | |
|------------------------------|--|-----------------------|--------------------------|
| Protein Name | Cyclin T2 | | |
| | Organism | Gene ID | UniProt ID |
| | Human | 905 ; | O60583 ; |
| Cellular Localization | Cytoplasm, perinuclear region . Nucleus . Nucleus in differentiating cells. . | | |
| Tissue specificity | Ubiquitously expressed. | | |
| Function | Function:Regulatory subunit of the cyclin-dependent kinase pair (CDK9/cyclin T) complex, also called positive transcription elongation factor B (P-TEFb), which is proposed to facilitate the transition from abortive to production elongation by phosphorylating the CTD (carboxy-terminal domain) of the large subunit of RNA polymerase II (RNAP II).,similarity:Belongs to the cyclin family. Cyclin C subfamily.,subunit:Associates with CDK9 to form P-TEFb. Isoform A and isoform B interact with HIV-2 and SIV Tat. Does not bind efficiently to the transactivation domain of the HIV-1 Tat.,tissue specificity:Ubiquitously expressed., | | |

Validation Data



Immunohistochemical analysis of paraffin-embedded human tonsil. 1, Antibody was diluted at 1:200(4° overnight). 2, Tris-EDTA,pH9.0 was used for antigen retrieval. 3,Secondary antibody was diluted at 1:200(room temperature, 30min).

Contact information

Orders: order.cn@immunoway.com
 Support: support.cn@immunoway.com
 Telephone: 400-8787-807(China)
 Website: <http://www.immunoway.com.cn>
 Address: 2200 Ringwood Ave San Jose, CA 95131 USA



Please scan the QR code to access additional product information:
Cyclin T2 Rabbit pAb

For Research Use Only. Not for Use in Diagnostic Procedures.

[Antibody](#) | [ELISA Kits](#) | [Protein](#) | [Reagents](#)