

CENP-M Rabbit pAb

CatalogNo: YT6221

Key Features

Host Species

- Rabbit

Reactivity

- Human, Mouse

Applications

- IHC, IF, WB

MW

- 20kD (Observed)

Isotype

- IgG

Recommended Dilution Ratios

IHC 1:50-200

WB 1:500-2000

IF 1:50-200

Storage

Storage*

-15°C to -25°C/1 year (Do not lower than -25°C)

Formulation

Liquid in PBS containing 50% glycerol, 0.5% BSA and 0.02% sodium azide.

Basic Information

Clonality

Polyclonal

Immunogen Information

Immunogen

Synthesized peptide derived from human CENP-M AA range: 30-110

Specificity

This antibody detects endogenous levels of human CENP-M

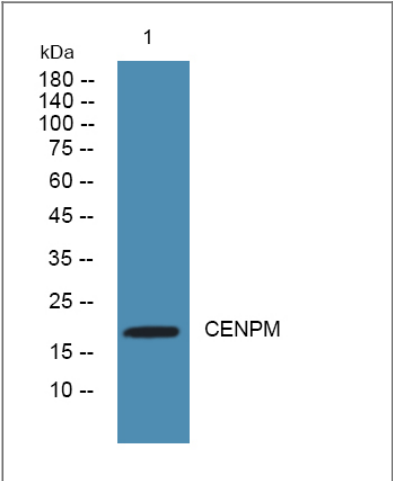
Target Information

Gene name

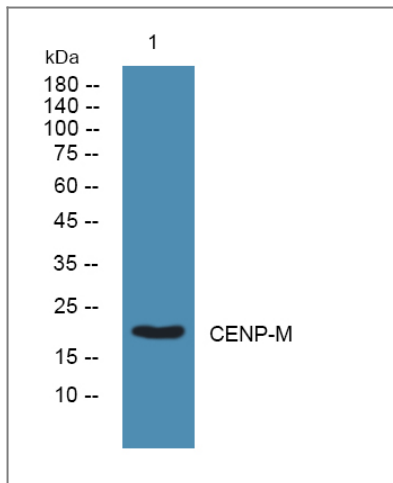
CENPM C22orf18 ICEN39 PANE1

Protein Name	CENP-M
	<div>Organism</div> <div>Human</div> <div>Gene ID</div> <div>79019;</div> <div>UniProt ID</div> <div>Q9NSP4;</div>
Cellular Localization	Nucleus. Cytoplasm. Chromosome, centromere, kinetochore. Nuclear in non-confluent cells and cytoplasmic in confluent or dividing cells (By similarity). Localizes in the kinetochore domain of centromeres. .
Tissue specificity	Isoform 3 is highly expressed in spleen, and intermediately in heart, prostate and ovary. Isoform 3 is highly expressed in resting CD19 B-cells and B-lineage chronic lymphocytic leukemia (B-CLL) cells and weakly expressed in activated B-cells. Isoform 1 is selectively expressed in activated CD19 cells and weakly in resting CD19 B-cells.
Function	Function:Component of the CENPA-NAC (nucleosome-associated) complex, a complex that plays a central role in assembly of kinetochore proteins, mitotic progression and chromosome segregation. The CENPA-NAC complex recruits the CENPA-CAD (nucleosome distal) complex and may be involved in incorporation of newly synthesized CENPA into centromeres.,subcellular location:Nuclear in non-confluent cells and cytoplasmic in confluent or dividing cells (By similarity). Localizes in the kinetochore domain of centromeres.,subunit:Component of the CENPA-NAC complex, at least composed of CENPA, CENPC, CENPH, CENPM, CENPN, CENPT and MLF1IP/CENPU. The CENPA-NAC complex interacts with the CENPA-CAD complex, composed of CENPI, CENPK, CENPL, CENPO, CENPP, CENPQ, CENPR and CENPS.,tissue specificity:Isoform 3 is highly expressed in spleen, and intermediately in heart, prostate and ovary. Isoform 3 is highly expressed in resting CD19 B-cells and B-lineage chronic lymphocytic leukemia (B-CLL) cells and weakly expressed in activated B-cells. Isoform 1 is selectively expressed in activated CD19 cells and weakly in resting CD19 B-cells.,

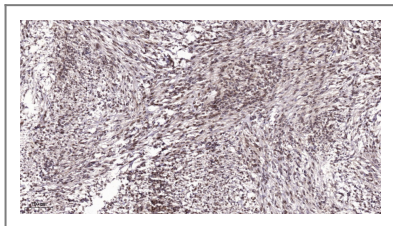
Validation Data



Western blot analysis of lysates from SW480 cells, primary antibody was diluted at 1:1000, 4°over night



Western blot analysis of lysates from SH-SY5Y cells, primary antibody was diluted at 1:1000, 4° over night



Immunohistochemical analysis of paraffin-embedded human Colon cancer. 1, Antibody was diluted at 1:200(4° overnight). 2, Tris-EDTA,pH9.0 was used for antigen retrieval. 3,Secondary antibody was diluted at 1:200(room temperature, 45min).

Contact information

Orders: order.cn@immunoway.com
 Support: support.cn@immunoway.com
 Telephone: 400-8787-807(China)
 Website: <http://www.immunoway.com.cn>
 Address: 2200 Ringwood Ave San Jose, CA 95131 USA



Please scan the QR code to access additional product information:
CENP-M Rabbit pAb

For Research Use Only. Not for Use in Diagnostic Procedures.

[Antibody](#) | [ELISA Kits](#) | [Protein](#) | [Reagents](#)