

## Keratin 77 Rabbit pAb

CatalogNo: YT6219

### | Key Features

#### Host Species

- Rabbit

#### Reactivity

- Human,Rat,Mouse,

#### Applications

- IHC,IF,WB

#### MW

- 61kD (Observed)

#### Isotype

- IgG

### | Recommended Dilution Ratios

IHC 1:50-200

WB 1:500-2000

IF 1:50-200

### | Storage

**Storage\*** -15°C to -25°C/1 year(Do not lower than -25°C)

**Formulation** Liquid in PBS containing 50% glycerol, 0.5% BSA and 0.02% sodium azide.

### | Basic Information

**Clonality** Polyclonal

### | Immunogen Information

**Immunogen** Synthesized peptide derived from human Keratin 77

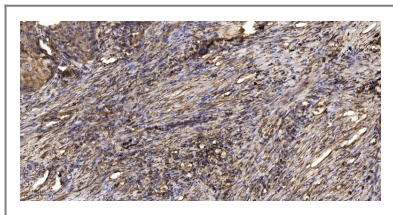
**Specificity** This antibody detects endogenous levels of human Keratin 77

### | Target Information

**Gene name** KRT77 KRT1B

<b>Protein Name</b>	Keratin 77		
	<b>Organism</b>	<b>Gene ID</b>	<b>UniProt ID</b>
	Human	<a href="#">374454;</a>	<a href="#">Q7Z794;</a>
<b>Cellular Localization</b>	cytoskeleton,intermediate filament,keratin filament,extracellular exosome,		
<b>Tissue specificity</b>	Expressed exclusively in skin.		
<b>Function</b>	miscellaneous:There are two types of cytoskeletal and microfibrillar keratin: I (acidic; 40-55 kDa) and II (neutral to basic; 56-70 kDa).,PTM:Undergoes deimination of some arginine residues (citrullination).,similarity:Belongs to the intermediate filament family.,tissue specificity:Expressed exclusively in skin.,		

## Validation Data



Immunohistochemical analysis of paraffin-embedded human Squamous cell carcinoma of lung. 1, Antibody was diluted at 1:200(4° overnight). 2, Tris-EDTA,pH9.0 was used for antigen retrieval. 3,Secondary antibody was diluted at 1:200(room temperature, 45min).

## Contact information

Orders: order.cn@immunoway.com  
 Support: support.cn@immunoway.com  
 Telephone: 400-8787-807(China)  
 Website: <http://www.immunoway.com.cn>  
 Address: 2200 Ringwood Ave San Jose, CA 95131 USA



Please scan the QR code to access additional product information:  
**Keratin 77 Rabbit pAb**

For Research Use Only. Not for Use in Diagnostic Procedures.

[Antibody](#) | [ELISA Kits](#) | [Protein](#) | [Reagents](#)