

## HPLN1 Rabbit pAb

CatalogNo: YT6214

### Key Features

#### Host Species

- Rabbit

#### Reactivity

- Human, Mouse, Rat

#### Applications

- IHC, IF, WB

#### MW

- 38kD (Observed)

#### Isotype

- IgG

### Storage

**Storage\*** -15°C to -25°C/1 year (Do not lower than -25°C)

**Formulation** Liquid in PBS containing 50% glycerol, 0.5% BSA and 0.02% sodium azide.

### Recommended Dilution Ratios

IHC 1:50-200

WB 1:500-2000

IF 1:50-200

### Basic Information

**Clonality** Polyclonal

### Immunogen Information

**Immunogen** Synthesized peptide derived from human HPLN1. AA range:76-146

**Specificity** This antibody detects endogenous levels of human HPLN1

### Target Information

**Gene name** HAPLN1 CRTL1

**Protein Name** HPLN1

**Organism**

**Gene ID**

**UniProt ID**

Human

[1404](#);

[P10915](#);

**Cellular Localization**

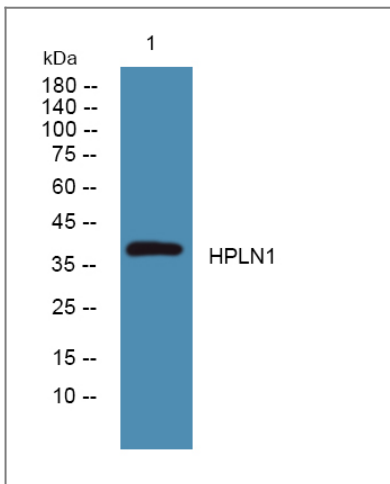
Secreted, extracellular space, extracellular matrix.

**Tissue specificity** Widely expressed. Weakly expressed in the brain.

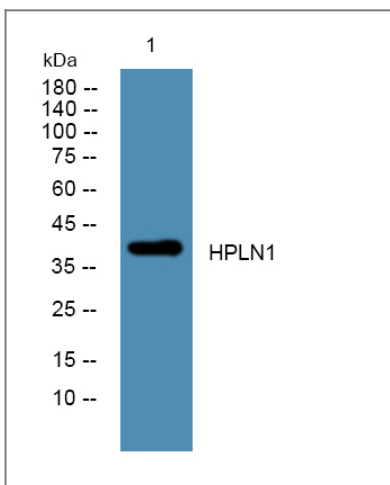
**Function**

Function:Stabilizes the aggregates of proteoglycan monomers with hyaluronic acid in the extracellular cartilage matrix.,similarity:Belongs to the HAPLN family.,similarity:Contains 1 Ig-like V-type (immunoglobulin-like) domain.,similarity:Contains 2 Link domains.,tissue specificity:Widely expressed. Weakly expressed in the brain.,

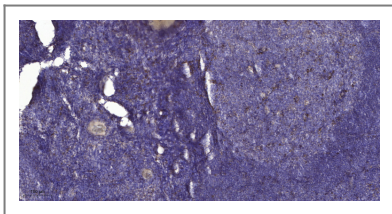
## Validation Data



Western blot analysis of lysates from SH-SY5Y cells, primary antibody was diluted at 1:1000, 4°over night



Western blot analysis of lysates from HCT116 cells, primary antibody was diluted at 1:1000, 4°over night



Immunohistochemical analysis of paraffin-embedded human tonsil. 1, Antibody was diluted at 1:200(4° overnight). 2, Tris-EDTA,pH9.0 was used for antigen retrieval. 3,Secondary antibody was diluted at 1:200(room temperature, 30min).

## | Contact information

Orders: [order.cn@immunoway.com](mailto:order.cn@immunoway.com)  
Support: [support.cn@immunoway.com](mailto:support.cn@immunoway.com)  
Telephone: 400-8787-807(China)  
Website: <http://www.immunoway.com.cn>  
Address: 2200 Ringwood Ave San Jose, CA 95131 USA



Please scan the QR code to access additional product information:  
**HPLN1 Rabbit pAb**

---

For Research Use Only. Not for Use in Diagnostic Procedures.

[Antibody](#) | [ELISA Kits](#) | [Protein](#) | [Reagents](#)