

## ATG4A Rabbit pAb

CatalogNo: YT6148

### Key Features

#### Host Species

- Rabbit

#### Reactivity

- Human, Mouse, Rat

#### Applications

- WB, ELISA

#### MW

- 40kD (Observed)

#### Isotype

- IgG

### Storage

**Storage\*** -15°C to -25°C/1 year (Do not lower than -25°C)

**Formulation** Liquid in PBS containing 50% glycerol, 0.5% BSA and 0.02% sodium azide.

### Recommended Dilution Ratios

**WB 1:500-2000**

**ELISA 1:10000-20000**

### Basic Information

**Clonality** Polyclonal

### Immunogen Information

**Immunogen** Synthesized peptide derived from human ATG4A Polyclonal. AA range:110-180

**Specificity** This antibody detects endogenous levels of ATG4A.

### Target Information

**Gene name** ATG4A APG4A AUTL2

**Protein Name** Cysteine protease ATG4A (AUT-like 2 cysteine endopeptidase) (Autophagin-2) (Autophagy-related cysteine endopeptidase 2) (Autophagy-related protein 4 homolog A) (hAPG4A)

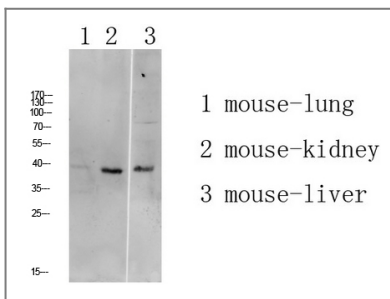
Organism	Gene ID	UniProt ID
Human	<a href="#">115201</a> ;	<a href="#">Q8WYN0</a> ;
Mouse	<a href="#">666468</a> ;	<a href="#">Q8C9S8</a> ;

**Cellular Localization** Cytoplasm .

**Tissue specificity** Epithelium,Kidney,Ovary,Prostate,Testis,

**Function** enzyme regulation:Inhibited by N-ethylmaleimide.,Function:Cysteine protease required for autophagy, which cleaves the C-terminal part of either MAP1LC3, GABARAPL2 or GABARAP, allowing the liberation of form I. A subpopulation of form I is subsequently converted to a smaller form (form II). Form II, with a revealed C-terminal glycine, is considered to be the phosphatidylethanolamine (PE)-conjugated form, and has the capacity for the binding to autophagosomes. Preferred substrate is GABARAPL2 followed by MAP1LC3A and GABARAP.,similarity:Belongs to the peptidase C54 family.,tissue specificity:Widely expressed, at a low level, and the highest expression is observed in skeletal muscle and brain. Also detected in fetal liver.,

## Validation Data



Western blot analysis of mouse-liver lysate, antibody was diluted at 1000. Secondary antibody(catalog#:RS0002) was diluted at 1:20000

## Contact information

Orders: [order.cn@immunoway.com](mailto:order.cn@immunoway.com)  
Support: [support.cn@immunoway.com](mailto:support.cn@immunoway.com)  
Telephone: 400-8787-807(China)  
Website: <http://www.immunoway.com.cn>  
Address: 2200 Ringwood Ave San Jose, CA 95131 USA



Please scan the QR code to access additional product information:  
**ATG4A Rabbit pAb**