

DUSP4 Rabbit pAb

CatalogNo: YT6141

Key Features

Host Species

- Rabbit

Reactivity

- Human, Mouse, Rat

Applications

- WB, ELISA

MW

- 44kD (Observed)

Isotype

- IgG

Recommended Dilution Ratios

WB 1:500-2000

ELISA 1:10000-20000

Storage

Storage*

-15°C to -25°C/1 year (Do not lower than -25°C)

Formulation

Liquid in PBS containing 50% glycerol, 0.5% BSA and 0.02% sodium azide.

Basic Information

Clonality

Polyclonal

Immunogen Information

Immunogen

Synthesized peptide derived from human DUSP4 Polyclonal

Specificity

This antibody detects endogenous levels of DUSP4.

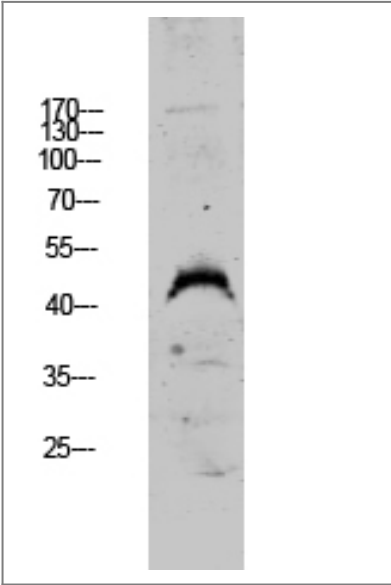
Target Information

Gene name

DUSP4 MKP2 VH2

Protein Name	Dual specificity protein phosphatase 4 (Dual specificity protein phosphatase hVH2) (Mitogen-activated protein kinase phosphatase 2) (MAP kinase phosphatase 2) (MKP-2)		
	Organism	Gene ID	UniProt ID
	Human	1846;	Q13115;
	Mouse	319520;	Q8BFV3;
	Rat	60587;	Q62767;
Cellular Localization	Nucleus .		
Tissue specificity	Skin,Uterus,		
Function	Catalytic activity:A phosphoprotein + H(2)O = a protein + phosphate.,Catalytic activity:Protein tyrosine phosphate + H(2)O = protein tyrosine + phosphate.,Function:Regulates mitogenic signal transduction by dephosphorylating both Thr and Tyr residues on MAP kinases ERK1 and ERK2.,similarity:Belongs to the protein-tyrosine phosphatase family. Non-receptor class dual specificity subfamily.,similarity:Contains 1 rhodanese domain.,similarity:Contains 1 tyrosine-protein phosphatase domain.,		

| Validation Data



Western blot analysis of A549 lysate, antibody was diluted at 1000. Secondary antibody(catalog#:RS0002) was diluted at 1:20000

| Contact information

Orders: order.cn@immunoway.com
Support: support.cn@immunoway.com
Telephone: 400-8787-807(China)
Website: <http://www.immunoway.com.cn>
Address: 2200 Ringwood Ave San Jose, CA 95131 USA



Please scan the QR code
to access additional
product information:
DUSP4 Rabbit pAb

For Research Use Only. Not for Use in Diagnostic Procedures.

[Antibody](#) | [ELISA Kits](#) | [Protein](#) | [Reagents](#)