

Integrin β 7 Rabbit pAb

CatalogNo: YT6080

Key Features

Host Species

- Rabbit

Reactivity

- Human, Mouse

Applications

- WB, ELISA, IHC

MW

- 130kD (Observed)

Isotype

- IgG

Storage

Storage* -15°C to -25°C/1 year (Do not lower than -25°C)

Formulation Liquid in PBS containing 50% glycerol, 0.5% BSA and 0.02% sodium azide.

Recommended Dilution Ratios

WB 1:500-2000

IHC 1:50-300

ELISA 1:2000-20000

Basic Information

Clonality Polyclonal

Immunogen Information

Immunogen Synthesized peptide derived from human Integrin β 7. at AA range: 671-720

Specificity Integrin β 7 Polyclonal Antibody detects endogenous levels of Integrin β 7

Target Information

Gene name ITGB7

Protein Name Integrin β 7

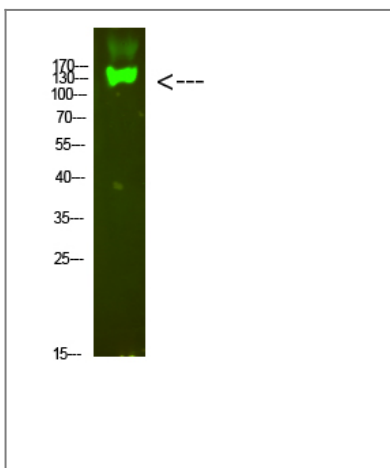
Organism	Gene ID	UniProt ID
Human	3695;	P26010;
Mouse	16421;	P26011;

Cellular Localization Membrane; Single-pass type I membrane protein.

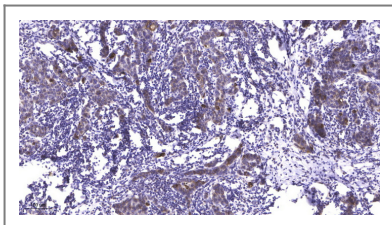
Tissue specificity Expressed in a variety of leukocyte lines.

Function Domain:Domain I contains three cation-binding sites: the ligand-integrin-binding site (LIMBS) , the metal ion-dependent adhesion site (MIDAS) , and the adjacent to MIDAS site (ADMIDAS) . In the absence of a ligand or in calcium-dependent binding , only ADMIDAS is occupied. In magnesium-dependent binding all three sites bind metal ions. LIMBS positively modify ligand binding whereas ADMIDAS negatively modify ligand binding. ,Function:Integrin alpha-4/beta-7 (Peyer patches-specific homing receptor LPAM-1) is an adhesion molecule that mediates lymphocyte migration and homing to gut-associated lymphoid tissue (GALT) . Integrin alpha-4/beta-7 interacts with the cell surface adhesion molecules MADCAM1 which is normally expressed by the vascular endothelium of the gastrointestinal tract. Interacts also with VCAM1 and fibronectin , an extracellular matrix component. It recognizes one or more domains within the alternatively spliced CS-1 region of fibronectin. Interactions involves the tripeptide L-D-T in MADCAM1 , and L-D-V in fibronectin. Binds to HIV-1 gp120 , thereby allowing the virus to enter GALT , which is thought to be the major trigger of AIDS disease. Interaction would involve a tripeptide L-D-I in HIV-1 gp120. Integrin alpha-E/beta-7 (HML-1) is a receptor for E-cadherin. ,induction:Integrin alpha-E/beta-7 is induced by TGFB1. ,similarity:Belongs to the integrin beta chain family. ,similarity:Contains 1 VWFA domain. ,subunit:Heterodimer of an alpha and a beta subunit. Beta-7 associates with either alpha-4 or alpha-E. Integrin alpha-4/beta-7 interacts with MADCAM1 , VCAM , fibronectin , and may also interact with HIV-1 gp120. ,tissue specificity:Expressed in a variety of leukocyte lines. ,

Validation Data



Western Blot analysis of mouse-heart cells using primary antibody diluted at 1:1000 (4°C overnight). Secondary antibody:Goat Anti-rabbit IgG IRDye 800 (diluted at 1:5000, 25°C, 1 hour)



Immunohistochemical analysis of paraffin-embedded human Breast cancer. 1, Antibody was diluted at 1:200 (4°C overnight). 2, Tris-EDTA, pH 9.0 was used for antigen retrieval. 3, Secondary antibody was diluted at 1:200 (room temperature, 45min).

| Contact information

Orders: order.cn@immunoway.com
Support: support.cn@immunoway.com
Telephone: 400-8787-807(China)
Website: <http://www.immunoway.com.cn>
Address: 2200 Ringwood Ave San Jose, CA 95131 USA



Please scan the QR code to access additional product information:
Integrin β 7 Rabbit pAb

For Research Use Only. Not for Use in Diagnostic Procedures.

[Antibody](#) | [ELISA Kits](#) | [Protein](#) | [Reagents](#)