

Granzyme M Rabbit pAb

CatalogNo: YT6049

Key Features

Host Species

- Rabbit

Reactivity

- Human,Rat

Applications

- IHC,IF,ELISA

Isotype

- IgG

Recommended Dilution Ratios

IHC 1:50-200

ELISA 1:10000-20000

IF 1:50-200

Storage

Storage* -15°C to -25°C/1 year(Do not lower than -25°C)

Formulation Liquid in PBS containing 50% glycerol, 0.5% BSA and 0.02% sodium azide.

Basic Information

Clonality Polyclonal

Immunogen Information

Immunogen Synthetic peptide from human protein at AA range: 207-256

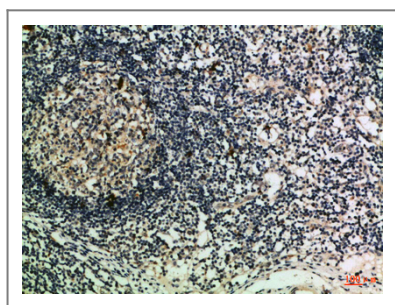
Specificity The antibody detects endogenous Granzyme M

Target Information

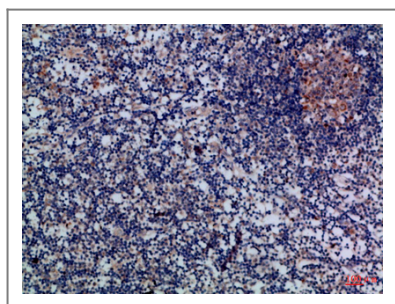
Gene name GZMM MET1

Protein Name	Granzyme M (Met-1 serine protease) (Hu-Met-1) (Met-ase) (Natural killer cell granular protease)		
	Organism	Gene ID	UniProt ID
	Human	3004;	P51124;
Cellular Localization	Secreted. Cytoplasmic granule. Granules of large granular lymphocytes.		
Tissue specificity	Highly and constitutively expressed in activated natural killer (NK) cells.		
Function	Function: Cleaves peptide substrates after methionine, leucine, and norleucine., similarity: Belongs to the peptidase S1 family. Granzyme subfamily., similarity: Contains 1 peptidase S1 domain., subcellular location: Granules of large granular lymphocytes.,		

Validation Data



Immunohistochemical analysis of paraffin-embedded Human-lymph, antibody was diluted at 1:100



Immunohistochemical analysis of paraffin-embedded Human-lymph, antibody was diluted at 1:100

Contact information

Orders: order.cn@immunoway.com
 Support: support.cn@immunoway.com
 Telephone: 400-8787-807(China)
 Website: <http://www.immunoway.com.cn>
 Address: 2200 Ringwood Ave San Jose, CA 95131 USA



Please scan the QR code
 to access additional
 product information:
**Granzyme M Rabbit
 pAb**

