

MCP-3 Rabbit pAb

CatalogNo: YT6046

| Key Features

Host Species

- Rabbit

Reactivity

- Human,Rat,Mouse,

Applications

- IHC,IF,ELISA

Isotype

- IgG

| Recommended Dilution Ratios

IHC 1:50-200**ELISA 1:10000-20000****IF 1:50-200**

| Storage

Storage*

-15°C to -25°C/1 year(Do not lower than -25°C)

Formulation

Liquid in PBS containing 50% glycerol, 0.5% BSA and 0.02% sodium azide.

| Basic Information

Clonality

Polyclonal

| Immunogen Information

Immunogen

Synthetic peptide from human protein at AA range: 50-99

Specificity

The antibody detects endogenous MCP-3

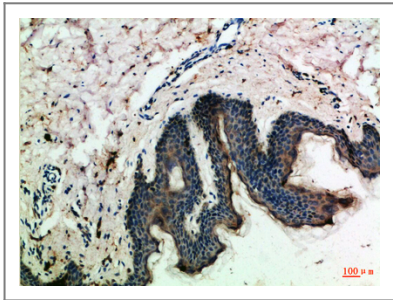
| Target Information

Gene name

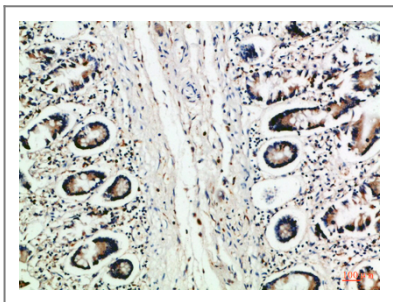
CCL7 MCP3 SCYA6 SCYA7

Protein Name	C-C motif chemokine 7 (Monocyte chemoattractant protein 3) (Monocyte chemotactic protein 3) (MCP-3) (NC28) (Small-inducible cytokine A7)		
	Organism	Gene ID	UniProt ID
	Human	6354;	P80098;
	Mouse	20306;	Q03366;
Cellular Localization	Secreted.		
Tissue specificity	Blood,Colon,Osteosarcoma,		
Function	Function:Chemotactic factor that attracts monocytes and eosinophils, but not neutrophils. Augments monocyte anti-tumor activity. Also induces the release of gelatinase B. This protein can bind heparin. Binds to CCR1, CCR2 and CCR3.,online information:CCL7 entry,PTM:O-glycosylated.,similarity:Belongs to the intercrine beta (chemokine CC) family.,subunit:Monomer.,		

| Validation Data



Immunohistochemical analysis of paraffin-embedded Human-skin, antibody was diluted at 1:100



Immunohistochemical analysis of paraffin-embedded Human-colon, antibody was diluted at 1:100

| Contact information

Orders: order.cn@immunoway.com
 Support: support.cn@immunoway.com
 Telephone: 400-8787-807(China)
 Website: <http://www.immunoway.com.cn>
 Address: 2200 Ringwood Ave San Jose, CA 95131 USA



Please scan the QR code
 to access additional
 product information:
MCP-3 Rabbit pAb

