

Epiregulin Rabbit pAb

CatalogNo: YT6045

| Key Features

Host Species

- Rabbit

Reactivity

- Human, Mouse, Rat

Applications

- IHC, IF, ELISA

Isotype

- IgG

| Recommended Dilution Ratios

IHC 1:50-200

ELISA 1:10000-20000

IF 1:50-200

| Storage

Storage* -15°C to -25°C/1 year (Do not lower than -25°C)

Formulation Liquid in PBS containing 50% glycerol, 0.5% BSA and 0.02% sodium azide.

| Basic Information

Clonality Polyclonal

| Immunogen Information

Immunogen Synthetic peptide from human protein at AA range: 71-120

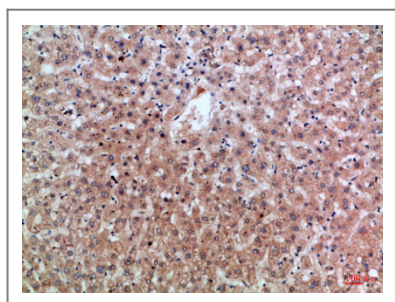
Specificity The antibody detects endogenous Epiregulin

| Target Information

Gene name EREG

Protein Name	Proepiregulin [Cleaved into: Epiregulin (EPR)]		
	Organism	Gene ID	UniProt ID
	Human	2069;	O14944;
	Mouse	13874;	Q61521;
Cellular Localization	[Epiregulin]: Secreted, extracellular space .; [Proepiregulin]: Cell membrane ; Single-pass type I membrane protein .		
Tissue specificity	In normal adults, expressed predominantly in the placenta and peripheral blood leukocytes. High levels were detected in carcinomas of the bladder, lung, kidney and colon.		
Function	Function:May be a mediator of localized cell proliferation. As a mitogen it may stimulate cell proliferation and/or angiogenesis.,similarity:Contains 1 EGF-like domain.,tissue specificity:In normal adults, expressed predominantly in the placenta and peripheral blood leukocytes. High levels were detected in carcinomas of the bladder, lung, kidney and colon.,		

Validation Data



Immunohistochemical analysis of paraffin-embedded Human-liver, antibody was diluted at 1:100

Contact information

Orders: order.cn@immunoway.com
 Support: support.cn@immunoway.com
 Telephone: 400-8787-807(China)
 Website: <http://www.immunoway.com.cn>
 Address: 2200 Ringwood Ave San Jose, CA 95131 USA



Please scan the QR code
 to access additional
 product information:
**Epiregulin Rabbit
 pAb**

For Research Use Only. Not for Use in Diagnostic Procedures.

[Antibody](#) | [ELISA Kits](#) | [Protein](#) | [Reagents](#)