

HLA-DM β Rabbit pAb

CatalogNo: YT6025

Key Features

Host Species

- Rabbit

Reactivity

- Human

Applications

- IHC,IF,ELISA

Isotype

- IgG

Recommended Dilution Ratios

IHC 1:50-200

ELISA 1:10000-20000

IF 1:50-200

Storage

Storage* -15°C to -25°C/1 year(Do not lower than -25°C)

Formulation Liquid in PBS containing 50% glycerol, 0.5% BSA and 0.02% sodium azide.

Basic Information

Clonality Polyclonal

Immunogen Information

Immunogen Synthetic peptide from human protein at AA range: 40-100

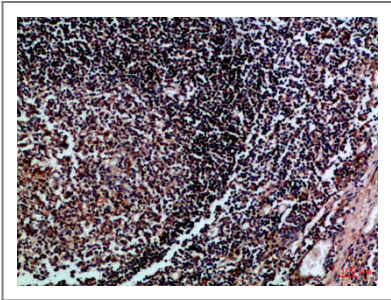
Specificity The antibody detects endogenous HLA-DM β

Target Information

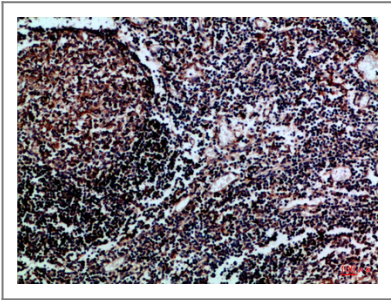
Gene name HLA-DMB DMB RING7

Protein Name	HLA class II histocompatibility antigen, DM beta chain (MHC class II antigen DMB) (Really interesting new gene 7 protein)		
	Organism	Gene ID	UniProt ID
	Human	3109;	P28068;
	Mouse		P35737;
Cellular Localization	Late endosome membrane ; Single-pass type I membrane protein . Lysosome membrane ; Single-pass type I membrane protein . Localizes to late endocytic compartment. Associates with lysosome membranes.		
Tissue specificity	Blood,Lymph,Plasma,Spleen,		
Function	Domain:The YXXZ (Tyr-Xaa-Xaa-Zaa, where Zaa is a hydrophobic residue) motif mediates the targeting to the lysosomal compartments.,Function:Plays a critical role in catalyzing the release of class II HLA-associated invariant chain-derived peptides (CLIP) from newly synthesized class II HLA molecules and freeing the peptide binding site for acquisition of antigenic peptides.,polymorphism:The following alleles of DMB are known: DMB*0101, DMB*0102, DMB*0103, DMB*0104 (DMB3.4), DMB*0105 and DMB*0106. The sequence shown is that of DMB*0101.,similarity:Belongs to the MHC class II family.,similarity:Contains 1 Ig-like C1-type (immunoglobulin-like) domain.,subcellular location:Localizes to late endocytic compartment. Associates with lysosome membranes.,subunit:Heterodimer of an alpha chain (DMA) and a beta chain (DMB).,		

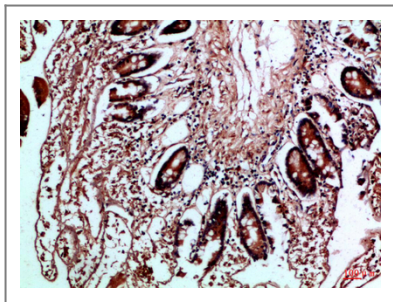
| Validation Data



Immunohistochemical analysis of paraffin-embedded Human-tonsil, antibody was diluted at 1:100



Immunohistochemical analysis of paraffin-embedded Human-tonsil, antibody was diluted at 1:100



Immunohistochemical analysis of paraffin-embedded Human-colon, antibody was diluted at 1:100

Contact information

Orders: order.cn@immunoway.com
Support: support.cn@immunoway.com
Telephone: 400-8787-807(China)
Website: <http://www.immunoway.com.cn>
Address: 2200 Ringwood Ave San Jose, CA 95131 USA



Please scan the QR code
to access additional
product information:
**HLA-DMβ Rabbit
pAb**

For Research Use Only. Not for Use in Diagnostic Procedures.

[Antibody](#) | [ELISA Kits](#) | [Protein](#) | [Reagents](#)