

PMCH Rabbit pAb

CatalogNo: YT6004

| Key Features

Host Species

- Rabbit

Reactivity

- Human, Mouse, Rat

Applications

- IHC, IF, ELISA

Isotype

- IgG

| Recommended Dilution Ratios

IHC 1:50-200

ELISA 1:10000-20000

IF 1:50-200

| Storage

Storage*

-15°C to -25°C/1 year (Do not lower than -25°C)

Formulation

Liquid in PBS containing 50% glycerol, 0.5% BSA and 0.02% sodium azide.

| Basic Information

Clonality

Polyclonal

| Immunogen Information

Immunogen

Synthetic peptide from human protein at AA range: 112-161

Specificity

The antibody detects endogenous PMCH

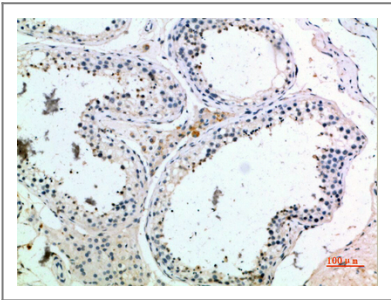
| Target Information

Gene name

PMCH MCH

Protein Name	Pro-MCH [Cleaved into: Neuropeptide-glycine-glutamic acid (NGE) (Neuropeptide G-E); Neuropeptide-glutamic acid-isoleucine (NEI) (Neuropeptide E-I); Melanin-concentrating hormone (MCH)]		
	Organism	Gene ID	UniProt ID
	Human	5367;	P20382;
	Mouse		P56942;
	Rat		P14200;
Cellular Localization	Secreted.		
Tissue specificity	Predominantly expressed in lateral hypothalamus, also detected in pallidum, neocortex and cerebellum. Also found in thymus, brown adipose tissue, duodenum and testis (spermatogonia, early spermatocytes and Sertoli cells). No expression in peripheral blood. In brain exclusively mature MCH and NEI peptides are present. In peripheral tissues a large product, encompassing the NEI and MCH domains of the precursor, is found predominantly.		
Function	Function:MCH may act as a neurotransmitter or neuromodulator in a broad array of neuronal functions directed toward the regulation of goal-directed behavior, such as food intake, and general arousal. May also have a role in spermatocyte differentiation.,PTM:Differentially processed in the brain and in peripheral organs producing two neuropeptides; NEI and MCH. A third peptide, NGE, may also be produced. Preferential processing in neurons by prohormone convertase 2 (PC2) generates NEI. MCH is generated in neurons of the lateral hypothalamic area by several prohormone convertases including PC1/3, PC2 and PC5/6.,similarity:Belongs to the melanin-concentrating hormone family.,tissue specificity:Predominantly expressed in lateral hypothalamus, also detected in pallidum, neocortex and cerebellum. Also found in thymus, brown adipose tissue, duodenum and testis (spermatogonia, early spermatocytes and Sertoli cells). No expression in peripheral blood. In brain exclusively mature MCH and NEI peptides are present. In peripheral tissues a large product, encompassing the NEI and MCH domains of the precursor, is found predominantly.,		

| Validation Data



Immunohistochemical analysis of paraffin-embedded human-testis, antibody was diluted at 1:200

| Contact information

Orders: order.cn@immunoway.com
Support: support.cn@immunoway.com
Telephone: 400-8787-807(China)
Website: <http://www.immunoway.com.cn>
Address: 2200 Ringwood Ave San Jose, CA 95131 USA



Please scan the QR code
to access additional
product information:
PMCH Rabbit pAb

For Research Use Only. Not for Use in Diagnostic Procedures.

[Antibody](#) | [ELISA Kits](#) | [Protein](#) | [Reagents](#)