

Abin-2 Rabbit pAb

CatalogNo: YT5987

| Key Features

Host Species

- Rabbit

Reactivity

- Human, Mouse, Rat

Applications

- IHC, IF, ELISA

Isotype

- IgG

| Recommended Dilution Ratios

IHC 1:50-200

ELISA 1:10000-20000

IF 1:50-200

| Storage

Storage*

-15°C to -25°C/1 year (Do not lower than -25°C)

Formulation

Liquid in PBS containing 50% glycerol, 0.5% BSA and 0.02% sodium azide.

| Basic Information

Clonality

Polyclonal

| Immunogen Information

Immunogen

Synthetic peptide from human protein at AA range: 61-110

Specificity

The antibody detects endogenous Abin-2

| Target Information

Gene name

TNIP2 ABIN2 FLIP1

Protein Name TNFAIP3-interacting protein 2 (A20-binding inhibitor of NF-kappa-B activation 2) (ABIN-2) (Fetal liver LKB1-interacting protein)

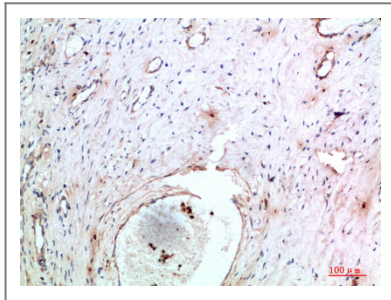
Organism	Gene ID	UniProt ID
Human	79155 ;	Q8NFZ5 ;
Mouse	231130 ;	Q99JG7 ;

Cellular Localization Cytoplasm . Nucleus .

Tissue specificity Ubiquitously expressed in all tissues examined.

Function Function:Inhibits NF-kappa-B activation by blocking the interaction of RIPK1 with its downstream effector IKBKG. Forms a ternary complex with NFKB1 and MAP3K8 but appears to function upstream of MAP3K8 in the TLR4 signaling pathway that regulates MAP3K8 activation.,subunit:Interacts with STK11, TNFAIP3, IKBKG, NFKB1, MAP3K8 and RIPK1.,tissue specificity:Ubiquitously expressed in all tissues examined.,

Validation Data



Immunohistochemical analysis of paraffin-embedded human-cervical-cancer, antibody was diluted at 1:200

Contact information

Orders: order.cn@immunoway.com
Support: support.cn@immunoway.com
Telephone: 400-8787-807(China)
Website: <http://www.immunoway.com.cn>
Address: 2200 Ringwood Ave San Jose, CA 95131 USA



Please scan the QR code to access additional product information:
Abin-2 Rabbit pAb

For Research Use Only. Not for Use in Diagnostic Procedures.

[Antibody](#) | [ELISA Kits](#) | [Protein](#) | [Reagents](#)