

CD300b Rabbit pAb

CatalogNo: YT5949

Key Features

Host Species

- Rabbit

Reactivity

- Human, Mouse

Applications

- IHC, IF, ELISA

Isotype

- IgG

Recommended Dilution Ratios

IHC 1:50-200

ELISA 1:10000-20000

IF 1:50-200

Storage

Storage*

-15°C to -25°C/1 year (Do not lower than -25°C)

Formulation

Liquid in PBS containing 50% glycerol, 0.5% BSA and 0.02% sodium azide.

Basic Information

Clonality

Polyclonal

Immunogen Information

Immunogen

Synthetic peptide from human protein at AA range: 61-110

Specificity

The antibody detects endogenous CD300b

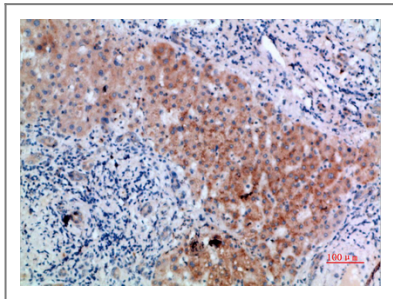
Target Information

Gene name

CD300LB CD300B CLM7 CMRF35A2 IREM3 LMIR5 TREM5 UNQ2530/PRO6029

Protein Name	CMRF35-like molecule 7 (CLM-7) (CD300 antigen-like family member B) (CMRF35-A2) (Immune receptor expressed on myeloid cells 3) (IREM-3) (Leukocyte mono-Ig-like receptor 5) (Triggering receptor expressed on myeloid cells 5) (TREM-5) (CD antigen CD300b)		
	Organism	Gene ID	UniProt ID
	Human	124599 ;	A8K4G0 ;
	Mouse	217304 ;	Q3U497 ;
Cellular Localization	Cell membrane ; Single-pass type I membrane protein .		
Tissue specificity	Expressed exclusively in myeloid lineages.		
Function	Function:Acts as an activating immune receptor through its interaction with ITAM-bearing adapter TYROBP, and also independently by recruitment of GRB2.,PTM:Phosphorylation on Tyr-188 by FYN is required for interaction with GRB2.,similarity:Belongs to the CD300 family.,similarity:Contains 1 Ig-like V-type (immunoglobulin-like) domain.,subunit:Interacts with TYROBP, which enhances cell surface expression and activation properties. Interacts with GRB2 in the presence of FYN.,tissue specificity:Expressed exclusively in myeloid lineages.,		

Validation Data



Immunohistochemical analysis of paraffin-embedded human-liver-cancer, antibody was diluted at 1:200

Contact information

Orders: order.cn@immunoway.com
 Support: support.cn@immunoway.com
 Telephone: 400-8787-807(China)
 Website: <http://www.immunoway.com.cn>
 Address: 2200 Ringwood Ave San Jose, CA 95131 USA



Please scan the QR code
 to access additional
 product information:
CD300b Rabbit pAb