

TIM-1 Rabbit pAb

CatalogNo: YT5888

Orthogonal Validated 

Key Features

Host Species

- Rabbit

Reactivity

- Human

Applications

- IHC

MW

- 40-50kD (Observed)

Isotype

- IgG

Recommended Dilution Ratios

IHC 1:50-300

Storage

Storage*

-15°C to -25°C/1 year(Do not lower than -25°C)

Formulation

Liquid in PBS containing 50% glycerol, 0.5% BSA and 0.02% sodium azide.

Basic Information

Clonality

Polyclonal

Immunogen Information

Immunogen

Synthetic peptide from human protein at AA range: 40-100

Specificity

The antibody detects endogenous TIM-1

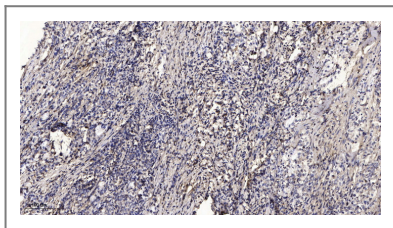
Target Information

Gene name

HAVCR1 KIM1 TIM1 TIMD1

Protein Name	Hepatitis A virus cellular receptor 1 (HAVcr-1) (Kidney injury molecule 1) (KIM-1) (T-cell immunoglobulin and mucin domain-containing protein 1) (TIMD-1) (T-cell membrane protein 1) (TIM-1) (TIM)		
	Organism	Gene ID	UniProt ID
	Human	26762 ;	Q96D42 ;
	Mouse	171283 ;	Q5QNS5 ;
Cellular Localization	Cell membrane ; Single-pass type I membrane protein .		
Tissue specificity	Widely expressed, with highest levels in kidney and testis. Expressed by activated CD4+ T-cells during the development of helper T-cells responses.		
Function	Function:May play a role in T-helper cell development and the regulation of asthma and allergic diseases. Receptor for TIMD4 (By similarity). In case of human hepatitis A virus (HHAV) infection, functions as a cell-surface receptor for the virus.,polymorphism:HHAV seropositivity protects against atopy in individuals with the variants Met-Thr-Thr-Val-Pro-157 ins and Met-Thr-Thr-Thr-Val-Pro-157 ins. Modernisation has led to a reduction in HAV seroprevalence and thus, may be, to an increase of expression of atopy, such as asthma, allergic rhinitis and atopic dermatitis. Allelic variation does not affect HAV-infection rates in Caucasians, Asians and African Americans.,similarity:Belongs to the immunoglobulin superfamily. TIM family.,similarity:Contains 1 Ig-like V-type (immunoglobulin-like) domain.,tissue specificity:Widely expressed, with highest levels in kidney and testis. Expressed by activated CD4+ T-cells during the development of helper T-cells responses.,		

Validation Data



Immunohistochemical analysis of paraffin-embedded human Gastric adenocarcinoma. 1, Antibody was diluted at 1:200(4° overnight). 2, Tris-EDTA,pH9.0 was used for antigen retrieval. 3,Secondary antibody was diluted at 1:200(room temperature, 45min).

Contact information

Orders: order.cn@immunoway.com
 Support: support.cn@immunoway.com
 Telephone: 400-8787-807(China)
 Website: <http://www.immunoway.com.cn>
 Address: 2200 Ringwood Ave San Jose, CA 95131 USA



Please scan the QR code to access additional product information:
TIM-1 Rabbit pAb

