

PLK2 Rabbit pAb

CatalogNo: YT5854

| Key Features

Host Species

- Rabbit

Reactivity

- Human,Rat

Applications

- IHC,IF,ELISA

Isotype

- IgG

| Recommended Dilution Ratios

IHC 1:50-200

ELISA 1:10000-20000

IF 1:50-200

| Storage

Storage* -15°C to -25°C/1 year(Do not lower than -25°C)

Formulation Liquid in PBS containing 50% glycerol, 0.5% BSA and 0.02% sodium azide.

| Basic Information

Clonality Polyclonal

| Immunogen Information

Immunogen Synthetic peptide from human protein at AA range: 377-451

Specificity The antibody detects endogenous PLK2

| Target Information

Gene name PLK2 SNK

Protein Name PLK2

Organism	Gene ID	UniProt ID
Human	10769;	Q9NYY3;
Mouse	20620;	P53351;
Rat		Q9R012;

Cellular Localization

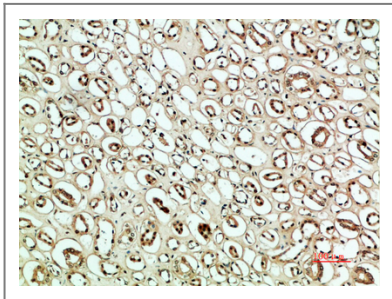
Cytoplasm, cytoskeleton, microtubule organizing center, centrosome, centriole . Cell projection, dendrite . Localizes to centrosomes during early G1 phase where it only associates to the mother centriole and then distributes equally to both mother and daughter centrioles at the onset of S phase.

Tissue specificity Expressed at higher level in the fetal lung, kidney, spleen and heart.

Function

Catalytic activity:ATP + a protein = ADP + a phosphoprotein.,Function:May play a role in the division of at least some cell types, such as fibroblasts, and could function in embryogenesis, wound healing or neoplasia.,similarity:Belongs to the protein kinase superfamily.,similarity:Belongs to the protein kinase superfamily. Ser/Thr protein kinase family. CDC5/Polo subfamily.,similarity:Contains 1 protein kinase domain.,similarity:Contains 2 POLO box domains.,

Validation Data



Immunohistochemical analysis of paraffin-embedded human-kidney, antibody was diluted at 1:200

Contact information

Orders: order.cn@immunoway.com
Support: support.cn@immunoway.com
Telephone: 400-8787-807(China)
Website: <http://www.immunoway.com.cn>
Address: 2200 Ringwood Ave San Jose, CA 95131 USA



Please scan the QR code to access additional product information:
PLK2 Rabbit pAb