

## Pan glycine myristoylation Rabbit pAb

CatalogNo: YT5835

### Key Features

#### Host Species

- Rabbit

#### Reactivity

- Species independent

#### Applications

- WB,ELISA

#### MW

- 130kD,80kD,35kD (Observed)

#### Isotype

- IgG

### Recommended Dilution Ratios

**WB 1:500-2000**

**ELISA 1:10000-20000**

### Storage

**Storage\*** -15°C to -25°C/1 year(Do not lower than -25°C)

**Formulation** Liquid in PBS containing 50% glycerol, 0.5% BSA and 0.02% sodium azide.

### Basic Information

**Clonality** Polyclonal

### Immunogen Information

**Immunogen** Synthetic myristoylated peptide

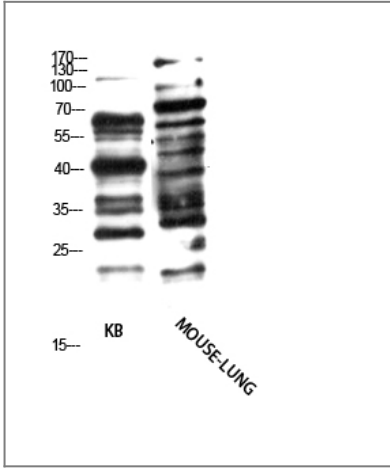
**Specificity** The antibody detects endogenous glycine myristoylated protein

### Target Information

**Protein Name**

---

## Validation Data



Western Blot analysis of KB, MOUSE-LUNG cells using Antibody diluted at 1000. Secondary antibody(catalog#:RS0002) was diluted at 1:20000

## Contact information

Orders: [order.cn@immunoway.com](mailto:order.cn@immunoway.com)  
Support: [support.cn@immunoway.com](mailto:support.cn@immunoway.com)  
Telephone: 400-8787-807(China)  
Website: <http://www.immunoway.com.cn>  
Address: 2200 Ringwood Ave San Jose, CA 95131 USA



Please scan the QR code to access additional product information:  
**Pan glycine myristoylation Rabbit pAb**

---

For Research Use Only. Not for Use in Diagnostic Procedures.

[Antibody](#) | [ELISA Kits](#) | [Protein](#) | [Reagents](#)