

TRPV4 Rabbit pAb

CatalogNo: YT5833

Key Features

Host Species

- Rabbit

Reactivity

- Human, Mouse, Rat

Applications

- WB, ELISA

MW

- 100kD (Observed)

Isotype

- IgG

Recommended Dilution Ratios

WB 1:500-2000

ELISA 1:10000-20000

Storage

Storage*

-15°C to -25°C/1 year (Do not lower than -25°C)

Formulation

Liquid in PBS containing 50% glycerol, 0.5% BSA and 0.02% sodium azide.

Basic Information

Clonality

Polyclonal

Immunogen Information

Immunogen

The antiserum was produced against synthesized peptide derived from the Internal region of human TRPV4. AA range: 461-510

Specificity

The antibody detects endogenous TRPV4 protein

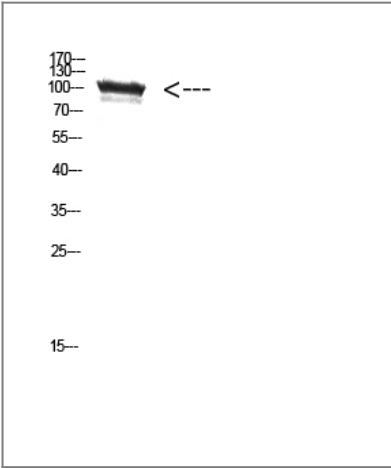
Target Information

Gene name

TRPV4 VRL2 VROAC

| | | | |
|------------------------------|--|-------------------------|--------------------------|
| Protein Name | transient receptor potential cation channel, subfamily V, member 4 | | |
| | Organism | Gene ID | UniProt ID |
| | Human | 59341 ; | Q9HBA0 ; |
| | Mouse | 63873 ; | Q9EPK8 ; |
| | Rat | | Q9ERZ8 ; |
| Cellular Localization | Cell membrane . Apical cell membrane ; Multi-pass membrane protein . Cell junction, adherens junction . Cell projection, cilium . Assembly of the putative homotetramer occurs primarily in the endoplasmic reticulum. .; [Isoform 1]: Cell membrane .; [Isoform 5]: Cell membrane .; [Isoform 2]: Endoplasmic reticulum .; [Isoform 4]: Endoplasmic reticulum .; [Isoform 6]: Endoplasmic reticulum . | | |
| Tissue specificity | Found in the synoviocytes from patients with (RA) and without (CTR) rheumatoid arthritis (at protein level). | | |
| Function | Disease:Defects in TRPV4 are the cause of brachyolmia type 3 [MIM:113500]; also called brachyrachia. The brachyolmias constitute a clinically and genetically heterogeneous group of skeletal dysplasias characterized by a short trunk, scoliosis and mild short stature. Type 3 brachyolmia is an autosomal dominant form with severe kyphoscoliosis and flattened, irregular cervical vertebrae.,Function:Non-selective calcium permeant cation channel probably involved in osmotic sensitivity and mechanosensitivity. Activation by exposure to hypotonicity within the physiological range exhibits an outward rectification. Also activated by low pH, citrate and phorbol esters. Increase of intracellular Ca(2+) potentiates currents. Channel activity seems to be regulated by a calmodulin-dependent mechanism with a negative feedback mechanism.,similarity:Belongs to the transient receptor family. TrpV subfamily.,similarity:Contains 3 ANK repeats.,subcellular location:Assembly of the putative homotetramer occurs primarily in the endoplasmic reticulum.,subunit:Homotetramer (Probable). Self-associates in a isoform-specific manner. Isoforms 1/A and 5/D but not isoform 2/B, 4/C and 6/E can oligomerize. Interacts with calmodulin. Interacts with Map7 and Src family Tyr protein kinases LYN, SRC, FYN, HCK, LCK and YES., | | |

| Validation Data



Western Blot analysis of HEPG2 cells using Antibody diluted at 500. Secondary antibody(catalog#:RS0002) was diluted at 1:20000

| Contact information

Orders: order.cn@immunoway.com
Support: support.cn@immunoway.com
Telephone: 400-8787-807(China)
Website: <http://www.immunoway.com.cn>
Address: 2200 Ringwood Ave San Jose, CA 95131 USA



Please scan the QR code
to access additional
product information:
TRPV4 Rabbit pAb

For Research Use Only. Not for Use in Diagnostic Procedures.

[Antibody](#) | [ELISA Kits](#) | [Protein](#) | [Reagents](#)