

## CREB3 Rabbit pAb

CatalogNo: YT5803

### | Key Features

#### Host Species

- Rabbit

#### Reactivity

- Human, Mouse, Rat

#### Applications

- WB, ELISA

#### MW

- 50kD (Observed)

#### Isotype

- IgG

### | Recommended Dilution Ratios

**WB 1:500-2000**

**ELISA 1:10000-20000**

### | Storage

#### Storage\*

-15°C to -25°C/1 year (Do not lower than -25°C)

#### Formulation

Liquid in PBS containing 50% glycerol, 0.5% BSA and 0.02% sodium azide.

### | Basic Information

#### Clonality

Polyclonal

### | Immunogen Information

#### Immunogen

The antiserum was produced against synthesized peptide derived from the Internal region of human CREB3. AA range:151-200

#### Specificity

CREB3 Polyclonal Antibody detects endogenous levels of CREB3

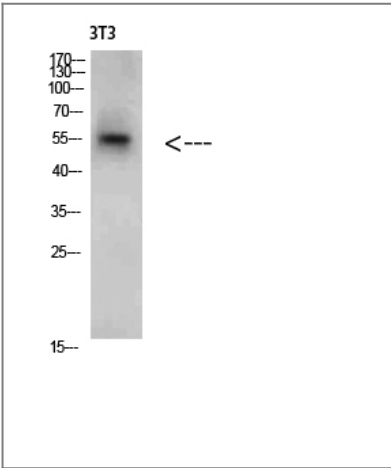
### | Target Information

#### Gene name

CREB3

<b>Protein Name</b>	CREB3		
	<b>Organism</b>	<b>Gene ID</b>	<b>UniProt ID</b>
	Human	<a href="#">10488;</a>	<a href="#">O43889;</a>
	Mouse		<a href="#">Q61817;</a>
<b>Cellular Localization</b>	<p>[Isoform 1]: Endoplasmic reticulum membrane ; Single-pass type II membrane protein . Golgi apparatus . Colocalizes with HCFC1 in neuronal cell bodies of the trigeminal ganglia (PubMed:10623756). Colocalizes with DCSTAMP in the ER membrane of immature dendritic cell (DC) (PubMed:20546900). Colocalizes with CANX, CCR1, HCFC1 in the ER membrane (PubMed:10623756). . ; [Isoform 2]: Nucleus . Cytoplasm . Predominantly in the nucleus (PubMed:19779205). Not associated with membranes (PubMed:19779205). . ; [Processed cyclic AMP-responsive element-binding protein 3]: Nucleus. Upon RIP activation the transcriptional active processed cyclic AMP-responsive element-binding protein 3 form translocates into the nucleus. Detected in the nucleus upon dendritic cell maturation and RIP activation. Colocalizes with CREBRF in nuclear foci. Colocalizes with CREBZF in promyelocytic leukemia protein nuclear bodies (PML-NB). . ; [Isoform 1]: Cytoplasm. (Microbial infection) Sequestered into the cytoplasm by the HCV core protein. .</p>		
<b>Tissue specificity</b>	Ubiquitously expressed (PubMed:9271389, PubMed:19779205). Expressed in dendritic cells (DC). Weakly expressed in monocytes (at protein level) (PubMed:20546900).		
<b>Function</b>	<p>Function:Transcription factors activated upon intramembrane proteolysis (RIP), binds the cAMP response element (CRE) (consensus: 5'-GTGACGT[AG][AG]-3'), a sequence present in many viral and cellular promoters. Binds to and requires HCFC1 as a coactivator. Activity and expression are suppressed when the HCFC1-CREB3 complex binds with CREBZF. Participates in LKN-1/CCL15-induced chemotaxis signaling.,PTM:During activation, an approximative 40 kDa fragment containing the cytoplasmic transcription factor domain is released by proteolysis. The cleavage is probably performed sequentially by site-1 and site-2 proteases.,PTM:N-glycosylated.,similarity:Belongs to the bZIP family. ATF subfamily.,similarity:Contains 1 bZIP domain.,subcellular location:Under activation the cleaved N-terminal cytoplasmic domain translocates into the nucleus.,subunit:Interacts with CCR1. Interacts with HCFC1; required to activate it. Binds with CREBZF only when in combination with HCFC1. Interacts with HCV core protein.,tissue specificity:Ubiquitous.,</p>		

Validation Data



Western Blot analysis of 3T3 cells using CREB3 Polyclonal Antibody diluted at 1:2000. Secondary antibody(catalog#:RS0002) was diluted at 1:20000

## | Contact information

Orders: order.cn@immunoway.com  
Support: support.cn@immunoway.com  
Telephone: 400-8787-807(China)  
Website: <http://www.immunoway.com.cn>  
Address: 2200 Ringwood Ave San Jose, CA 95131 USA



Please scan the QR code  
to access additional  
product information:  
**CREB3 Rabbit pAb**

---

For Research Use Only. Not for Use in Diagnostic Procedures.

[Antibody](#) | [ELISA Kits](#) | [Protein](#) | [Reagents](#)