

Collagen alpha-1(XXVIII)pAb

CatalogNo: YT5784

Key Features

Host Species

- Rabbit

Reactivity

- Human, Mouse

Applications

- WB, ELISA

MW

- 116kD (Observed)

Isotype

- IgG

Recommended Dilution Ratios

WB 1:500-2000

ELISA 1:10000-20000

Storage

Storage* -15°C to -25°C/1 year (Do not lower than -25°C)

Formulation Liquid in PBS containing 50% glycerol, 0.5% BSA and 0.02% sodium azide.

Basic Information

Clonality Polyclonal

Immunogen Information

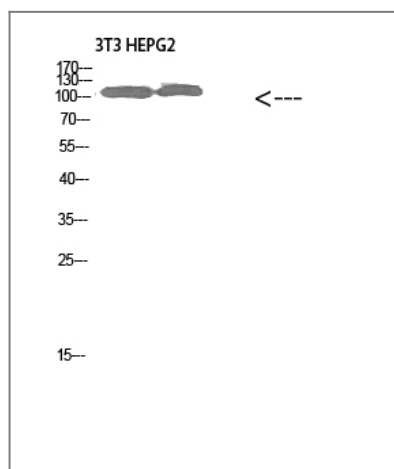
Immunogen The antiserum was produced against synthesized peptide derived from the N-terminal region of human COL28A1. AA range:111-160

Specificity Collagen alpha-1(XXVIII) Polyclonal Antibody detects endogenous levels of Collagen alpha-1(XXVIII) Polyclonal Antibody

Target Information

Gene name	COL28A1		
Protein Name	Collagen alpha-1(XXVIII)Polyclonal Antibody		
	Organism	Gene ID	UniProt ID
	Human	340267;	Q2UY09;
	Mouse	213945;	Q2UY11;
Cellular Localization	Secreted, extracellular space, extracellular matrix, basement membrane .		
Tissue specificity	Endometrial adenocarcinoma,Germ cell,Lung,		
Function	Function:May act as a cell-binding protein.,similarity:Belongs to the VWA-containing collagen family.,similarity:Contains 1 BPTI/Kunitz inhibitor domain.,similarity:Contains 2 VWFA domains.,similarity:Contains 6 collagen-like domains.,subunit:Trimer or homomer. Secreted into as a 135 kDa monomer under reducing conditions and as a homotrimer under non-reducing conditions.,		

Validation Data



Western Blot analysis of 3T3 HEPG2 cells using Collagen alpha-1(XXVIII)Polyclonal Antibody diluted at 1:1000. Secondary antibody(catalog#:RS0002) was diluted at 1:20000

Contact information

Orders: order.cn@immunoway.com
 Support: support.cn@immunoway.com
 Telephone: 400-8787-807(China)
 Website: <http://www.immunoway.com.cn>
 Address: 2200 Ringwood Ave San Jose, CA 95131 USA



Please scan the QR code
 to access additional
 product information:
**Collagen
 alpha-1(XXVIII)pAb**

