

CD158e Rabbit pAb

CatalogNo: YT5716

Key Features

Host Species

- Rabbit

Reactivity

- Human,Rat,Mouse,

Applications

- WB,IHC,IF,ELISA

MW

- 50kD (Observed)

Isotype

- IgG

Recommended Dilution Ratios

WB 1:500-1:2000

IHC: 1:100-1:300

ELISA 1:10000

IF 1:50-200

Storage

Storage*

-15°C to -25°C/1 year(Do not lower than -25°C)

Formulation

Liquid in PBS containing 50% glycerol, 0.5% BSA and 0.02% sodium azide.

Basic Information

Clonality

Polyclonal

Immunogen Information

Immunogen

Synthesized peptide derived from Killer cell immunoglobulin-like receptor 3DL1 at AA range: 21-70

Specificity

CD158e Polyclonal Antibody detects endogenous levels of CD158e protein.

Target Information

Gene name KIR3DL1

Protein Name Killer cell immunoglobulin-like receptor 3DL1

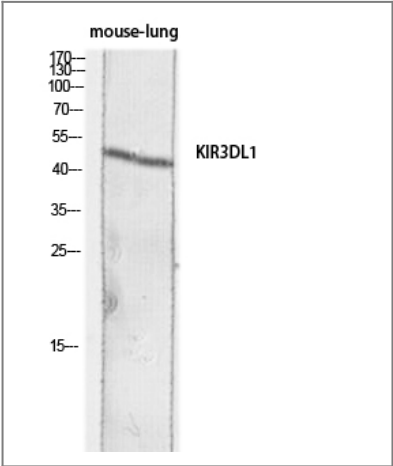
Organism	Gene ID	UniProt ID
Human	3811 ;	P43629 ;
Mouse		P83555 ;
Rat	353253 ;	P83556 ;

Cellular Localization Cell membrane; Single-pass type I membrane protein.

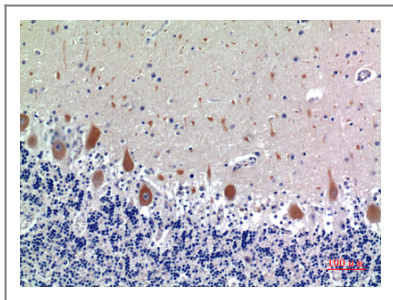
Tissue specificity Blood,Brain,Lymphoi

Function:Receptor on natural killer (NK) cells for HLA Bw4 allele. Inhibits the activity of NK cells thus preventing cell lysis.,Function:Receptor on natural killer (NK) cells for HLA-C alleles. Does not inhibit the activity of NK cells.,polymorphism:The KIR genes are located in a segment of DNA on 19q13.4 in the leukocyte receptor complex that has undergone expansion and contraction over time, probably through unequal crossing-over. Thus, KIR haplotypes vary in the number and types of genes, although a few framework loci, such as the gene KIR3DL1, are present on all or nearly all haplotypes. KIR3DL1 and KIR3DS1 segregate as alleles of the locus KIR3DL1/3DS1.,similarity:Belongs to the immunoglobulin superfamily.,similarity:Contains 3 Ig-like C2-type (immunoglobulin-like) domains.,tissue specificity:Expressed in NK and T-cell lines but not in B-lymphoblastoid cell lines or in a colon carcinoma cell line.,

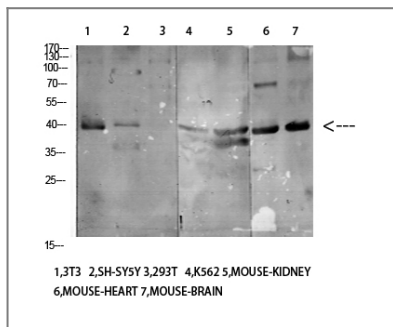
Validation Data



Western blot analysis of mouse-lung lysis using KIR3DL1 antibody. Antibody was diluted at 1:1000. Secondary antibody(catalog#:RS0002) was diluted at 1:20000



Immunohistochemical analysis of paraffin-embedded human-brain, antibody was diluted at 1:100



Western Blot analysis of various cells using Antibody diluted at 1:1000. Secondary antibody(catalog#:RS0002) was diluted at 1:20000

Contact information

Orders: order.cn@immunoway.com
 Support: support.cn@immunoway.com
 Telephone: 400-8787-807(China)
 Website: <http://www.immunoway.com.cn>
 Address: 2200 Ringwood Ave San Jose, CA 95131 USA



Please scan the QR code to access additional product information:

CD158e Rabbit pAb

For Research Use Only. Not for Use in Diagnostic Procedures.

[Antibody](#) | [ELISA Kits](#) | [Protein](#) | [Reagents](#)